



Meeting	Cabinet Committee: Local Plan
Date and Time	Thursday, 10th August, 2023 at 10.00 am.
Venue	Walton Suite, Guildhall, Winchester

Note: This meeting is being held in person at the location specified above. Members of the public should note that a live video feed of the meeting will be available from the council's YouTube channel ([youtube.com/WinchesterCC](https://www.youtube.com/WinchesterCC)) during the meeting.

A limited number of seats will be made available at the above named location however attendance must be notified to the council before the meeting. Please note that priority will be given to those wishing to attend and address the meeting over those wishing to attend and observe.

AGENDA

PROCEDURAL ITEMS

- 1. Apologies**
To record the names of apologies given.
- 2. Disclosure of Interests**
To receive any disclosure of interests from Members and Officers in matters to be discussed.
Note: Councillors are reminded of their obligations to declare disclosable pecuniary interests, personal and/or prejudicial interests in accordance with legislation and the Council's Code of Conduct.
- 3. To note any request from Councillors to make representations on an agenda item.**
Note: Councillors wishing to speak about a particular agenda item are required to register with Democratic Services before the meeting (contact: democracy@winchester.gov.uk or 01962 848 264). Councillors will normally be invited by the Chairperson to speak during the appropriate item (after the Cabinet Member's introduction and questions from other Cabinet Members).



4. **Public Participation**

NB members of the public are required to register with Democratic Services by 5pm on Tuesday 8th August 2023 (contact: democracy@winchester.gov.uk or 01962 848 264).

Members of the public and visiting councillors may speak at this meeting on a specific item due for decision, provided they have registered to speak in advance. Please contact Democratic Services by 5pm **on Tuesday 8 August 2023** via democracy@winchester.gov.uk or (01962) 848 264 to register to speak and for further details.

BUSINESS ITEMS

5. **Chairperson's announcements**

6. Revised Local Development Scheme (CAB3419(LP)) and Presentation) (Pages 7 - 82)

Key Decision

(CAB3419(LP))

Laura Taylor
Chief Executive

All of the Council's publicly available agendas, reports and minutes are available to view and download from the Council's [Website](#) and are also open to inspection at the offices of the council. As part of our drive to minimise our use of paper we do not provide paper copies of the full agenda pack at meetings. We do however, provide a number of copies of the agenda front sheet at the meeting which contains the QR Code opposite. Scanning this code enables members of the public to easily access all of the meeting papers on their own electronic device. Please hold your device's camera or QR code App over the QR Code so that it's clearly visible within your screen and you will be redirected to the agenda pack.



2 August 2023

Agenda Contact: David Blakemore, Democratic Services Team Manager
Tel: 01962 848217 Email: dblakemore@winchester.gov.uk

MEMBERSHIP

Cabinet Committee: Local Plan

Councillors Porter (Cabinet Member for Place and Local Plan – Chairperson),
Learney and Tod

Non-voting invited councillors: Councillors Horrill, Laming, Lee, Read and Williams

In the event of any member of Cabinet not being available for a meeting of the Cabinet Committee another member of Cabinet may deputise where no conflict arises.

For the meeting on 10 August 2023, the membership expected from Cabinet is: Councillor Porter (Chairperson), Thompson and Westwood.

Deputies for the non-voting invited councillors can be appointed from any group at the Chairperson's discretion.

Quorum = 2 voting members

TERMS OF REFERENCE

1. To oversee the Council's development of the Local Plan (2019 – 2039) and to ensure the programme to deliver the plan is timely and within the policy and budget framework approved by Council.
2. To monitor and oversee the Council's Local Plan (2019 – 2039) strategies and the delivery of associated documents relating to policy options, draft policies and evidence prepared to support the Local Plan.
3. To exercise the executive functions set out below in relation to Strategic Planning Services and the Local Plan (2019 – 2039).
4. To make recommendations as required to Cabinet and Council.

Delegated Matters

1. To oversee the development of the Local Plan (2019 – 2039) of the Council and to ensure that the objectives established by Cabinet are met, and in particular:
 - (i) to exercise those financial management and procurement powers of Cabinet set out below in respect of the production of the Local Plan
 - (ii) to agree the Project Plan and monitor progress of the project against that Plan including key milestones;
 - (iii) to agree progression to the next stages of delivery as set out in the Project Plan;
 - (iv) to ensure effective actions are in place to address key risks;
 - (v) to consider and agree methods of consultation and engagement;
 - (vi) to review Local Plan (2019 – 2039) that are under development.

2. To exercise the powers of Cabinet under the Financial Procedure Rules in respect of the production of technical reports and advice for the Local Plan (2019 – 2039).
3. To exercise the following powers of Cabinet under the Contract Procedure Rules in relation to the procurement of contracts for works, goods, software or services in connection with the Project:-
 - (i) approval of price/quality evaluation criteria;
 - (ii) approval of short-listing procedures, short-list selection and approved lists of contractors, including the authorisation of any departures from Contract Procedure Rules;
 - (iii) award of Contract.

Referred Matters

To advise Cabinet on:

4. Any proposals in which the limitations set out above in the Delegated Matters would be exceeded or where risks are considered necessary to be raised with Cabinet.

To advise Cabinet and Council on:

5. Approval of a revenue virement or supplementary revenue estimate over £250,000.
6. Any matters of policy that need to be brought to their attention.
7. Any other matter as considered appropriate by the Cabinet Committee.

Public Participation at meetings

Representations will be limited to a maximum of 3 minutes, subject to a maximum 15 minutes set aside for all questions and answers.

To reserve your place to speak, you are asked to **register with Democratic Services prior to the meeting** – please see public participation agenda item below for further details. People will be invited to speak in the order that they have registered, subject to the maximum time period allowed for speaking not being exceeded. Public Participation is at the Chairperson's discretion.

Filming and Broadcast Notification

This meeting will be recorded and broadcast live on the Council's website. The meeting may also be recorded and broadcast by the press and members of the public – please see the Access to Information Procedure Rules within the Council's Constitution for further information, which is available to view on the [Council's website](#). Please note that the video recording is subtitled but you may have to enable your device to see them (advice on how to do this is on the meeting page).

Disabled Access

Disabled access is normally available, but please phone Democratic Services on 01962 848 264 or email democracy@winchester.gov.uk to ensure that the necessary arrangements are in place.

This page is intentionally left blank

CAB3419(LP)
CABINET COMMITTEE: LOCAL PLAN

REPORT TITLE: REVISED LOCAL DEVELOPMENT SCHEME

10 AUGUST 2023

REPORT OF CABINET MEMBER: COUNCILLOR JACKIE PORTER, CABINET MEMBER FOR PLACE AND LOCAL PLAN

Contact Officer: Adrian Fox Tel No: 01962 848278 Email
AFox@Winchester.gov.uk

WARD(S): ALL (TO THE EXTENT THAT THEY ARE NOT WITHIN THE SOUTH DOWNS NATIONAL PARK)

PURPOSE

The Council has a statutory duty under the Planning and Compulsory Purchase Act 2004 (as amended) to maintain an up-to-date Local Development Scheme (LDS). The revised LDS attached to this report (Appendix 2) would fulfil this requirement including by setting out an adjusted timetable for the production of the Council's Local Plan. The purpose of this report is to seek approval to this revised Local Development Scheme (LDS) which was previously brought into effect in July 2021 and to set out the factors that have resulted in the need to revise the LDS.

RECOMMENDATIONS:

1. That the revised Winchester District Local Development Scheme August 2023, as set out in Appendix 2 to this Report, be approved and brought into immediate effect; and
3. That authority is delegated to the Strategic Planning Manager, in consultation with the Cabinet Member for Place and Local Plan, to undertake minor updating and drafting of any amendments required prior to publication.

IMPLICATIONS:1 COUNCIL PLAN OUTCOME

- 1.1 Tackling the Climate Emergency and Creating a Greener District
- 1.2 The Local Development Scheme (LDS) sets out the timetable for the preparation and adoption of the Local Plan which is a statutory requirement of Section 15 of the Planning and Compulsory Purchase Act 2004 (as amended). The preparation of the Local Plan must comply with the requirements of national planning legislation and the need to deliver sustainable development which encompasses all considerations in relation to the built and natural environment.
- 1.3 The LDS does not include any Local Plan policies on tackling the climate emergency and creating a greener district as this is the role of the Local Plan. The draft Regulation 18 Local Plan was prepared through the climate emergency lens. It is important that the Local Plan is read as a whole as there are a number of policies in the plan that will, when it is adopted, contribute towards dramatically cutting the district's carbon footprint and assist the Council to become carbon neutral by 2024 and achieve the same position for the district by 2030.
- 1.4 Homes for all
- 1.5 It is the role of the Local Plan rather than the LDS to determine where and how much residential development should be located in the district outside the South Downs National Park. The number of new homes that we need to plan for is set by the government by its standard method (currently 692 dwellings per year). The government requires all authorities in the country to have a five-year rolling supply of housing land. The Local Plan includes a development strategy and identifies the quantum of housing that will be required predominantly in Winchester, the market towns, and larger villages, to meet the government target for our district.
- 1.6 Vibrant Local Economy
- 1.7 Whilst this is not a matter for the LDS, creating a vibrant economy is a really important matter for the Local Plan. The Local Plan identifies how we will enable Winchester District to continue to have a vibrant economy by providing opportunities for new purpose-built employment space, the sustainable consolidation and expansion of existing businesses, and preservation of current employment floor space whilst seeking to protect and enhance our town and other centres which provide a range of facilities and services.
- 1.8 It is important that the Local Plan that is submitted to an Inspector for the Local Plan Examination is based on a sound evidence base that is up-to-date. Both the Retail and Employment studies were concluded at the outbreak of COVID-19 in 2020. As these studies needed to be refreshed and updated, consultants have been appointed to prepare a Town centre and Employment

update. The revised LDS has factored in when the findings from these two reports will be made available and they can be incorporated in the Regulation 19 Local Plan.

1.9 Living Well

1.10 It is the role of the of the Local Plan rather than LDS to identify how developers need to achieve high quality, well-designed places which are all a critical part of place making and an integral component of climate change and the city council's journey to net-zero and health and wellbeing agendas. Allied to this an important function of the new Local Plan is that it needs to fully consider and address how development can help meet the needs of our residents including age ranges, genders and ability which have been incorporated into a topic on High Quality, Well-Designed Places and Living Well.

1.11 Your Services, Your Voice

1.12 Whilst there is no legal requirement to consult on the Local Development Scheme, the Local Plan has been developed using a variety of engagement and consultation techniques. A key part of the plan making process is to seek early and open engagement on the content and shape of the draft Local Plan which is one of the reasons the LDS must be kept up-to-date so that people are kept informed about progress on the Local Plan and the next steps.

1.13 At the heart of any new plan is the development strategy for the district and options were consulted upon as part of the Strategic Issues & Priorities Document (SIP) in 2020 and feedback that has been received on the draft Regulation 18 Plan. All of this information will be used to inform the Regulation 19 Local Plan.

2 FINANCIAL IMPLICATIONS

2.1 The resources for the preparation of the various elements of the Local Plan is approved as part of the budget process.

2.2 The Local Plan had an earmarked reserve balance of £290k at the start of 2022/23 along with a baseline revenue budget of £36,700. The current forecast for external expenditure supporting the current local plan has recently increased in order to be able to deal with the additional unforeseen cost of changes such as the introduction of the requirement to have additional studies (e.g. Local Plan Viability Assessment, undertaking more work on Sustainability Appraisal and employing Counsel) and for additional research to be prepared on introducing energy efficiency standards and on embodied carbon, This is in addition to in-house resources to operate the Local Plan team.

2.3 The local plan spending forecast has been updated to reflect the additional requirements and this has flagged a shortfall in funding for 2024/25. In addition to this it is important to start planning for the next five year local plan

period, historically funding has been made available in earmarked reserves in advance of the five year work plan. Plans to address these shortfalls are presented to September Cabinet within the General Fund Outturn report.

3 LEGAL AND PROCUREMENT IMPLICATIONS

- 3.1 Having an up-to-date LDS is a fundamental element of the Local Plan process and it is a requirement to submit the LDS at submission stage to the Planning Inspectorate. Maintaining an up-to-date LDS is one of the first tests of soundness at the Local Plan examination as it is statutory requirement under Section 15 of the Planning and Compulsory Purchase Act 2004 (as amended). It is, therefore, essential that it is kept under review and updated accordingly.
- 3.2 The Local Plan must be prepared in line with the process set out in national legislation/regulations and can only be adopted by the Council if it is found to be legally compliant and sound by a Planning Inspector that is appointed by the Secretary of State to conduct a public examination.

4 WORKFORCE IMPLICATIONS

- 4.1 The Strategic Planning Team leads the preparation of the Local Plan and associated documents that are included in the LDS. This includes commissioning consultants and working with colleagues across the whole of the council, neighbouring local planning authorities under the Duty to Co-operate, statutory agencies (Natural England, Historic England and the Environment Agency et al) and the Partnership for South Hampshire (PfSH).
- 4.2 The resource available to the team are kept under review to ensure the plan process remains on track culminating in adoption of the new plan. As all the Strategic Planning team are employed directly by the Council, there are no workforce implications for the extension to the timeline but the longer the timeframe, there is a risk of staff leaving or leaving as a result of retirement.

5 PROPERTY AND ASSET IMPLICATIONS

- 5.1 Once the Local Plan has been adopted, it will be the statutory Development Plan which means that any applications that come forward that are made by council, or involve land in our ownership, will need to be assessed against the policies and proposals in the Plan.
- 5.2 The LDS does not contain any Local Plan policies that have property and asset implications.

6 CONSULTATION AND COMMUNICATION

- 6.1 There is no requirement to consult on the LDS, however, the Council is required to make it publicly available and keep it up to date. Discussions have taken place with the Cabinet Member for Place and Local Plan regarding the content of this revised LDS. An all Member briefing will be

arranged prior to the Cabinet meeting. An email alert will also be sent to Parish and Town Councils and organisations that are registered to receive updates on the Local Plan will be notified about the Cabinet meeting.

ENVIRONMENTAL CONSIDERATIONS

- 6.2 The Council's declaration of climate emergency is a defining issue for the Regulation 18 Local Plan in terms of how the Plan can support the objective of dramatically cutting the district's emissions. The preparation of the Local Plan must comply with the requirements of national planning legislation and the need to deliver sustainable development which encompasses all considerations in relation to the built and natural environment.

7 PUBLIC SECTOR EQUALITY DUTY

- 7.1 The LDS does not introduce new policy. However, undertaking an Equality Impact Assessment (EqIA) is a key part of preparing a 'sound' Local Plan and has been factored into the timetable that has been included in LDS. The Local Plan process needs to ensure that the issues and options that are considered during the process do not lead to direct and indirect discrimination, and should advance equality of opportunity and foster good relations between those with a 'protected characteristic' (race, age, sex, disability, sexual orientation, gender reassignment, religion or belief and pregnancy or maternity) and all others.
- 7.2 The same consultants have been appointed to undertake an EqIA and Health Impact Assessment, alongside the Sustainability Appraisal and the Habitats Regulations Assessment cited above, under the umbrella of the IIA for the SA and EqIA.
- 7.3 The Local Plan will be subject to and required to publish equality impact assessments to ensure that the policies and proposals are consistent with the Council's Equality Policy.

8 DATA PROTECTION IMPACT ASSESSMENT

- 8.1 Not Applicable. The LDS is a project management tool that sets out the timetable for the Local Plan.

9 RISK MANAGEMENT

- 9.1 The production of a Local Plan requires consideration of the potential risks involved in its preparation. These vary from local matters such as changes in staffing levels or political / administrative changes to those of regional or national significance including publication of revised government guidance and changes to the plan making system.

- 9.2 The current Local Plan covers the period 2019 to 2039. The current LDS identifies that the Local Plan would be adopted in August 2024. The end date of the Local Plan is important as it a requirement by government that Local Plans cover a minimum of 15 years from the date of adoption.
- 9.3 Extending the timetable for preparing the Local Plan, which this paper is recommending, would mean that the end date of the Local Plan would need to be amended to cover the period 2020 – 2040. There is a potential risk with extending the Plan period as the Council would not be able to count the housing completions that took place in 2019 (643 dwellings). However, as housing completions at the Major Development Areas at Whiteley and the West of Waterlooville are both delivering significant housing completions, Officers consider that this risk would not have an impact on the housing buffer in the Regulation 18 Local Plan (1,450 dwellings). Allied to this, the longer that it takes the Council to adopt the Local Plan means that:
- it continues to be important that the Council is able to demonstrate that it can maintain a 5 year housing supply so that existing Local Plan policies are not superseded by any changes in the National Planning Policy Framework (maintaining a 5 year housing land supply is becoming increasingly harder due to the impacts of nutrient neutrality);
 - the longer it will take for the Council to start implementing new Local Plan policies such as the policies on energy efficiency standards and raising the bar on design issues; and
 - Developers who have sites that are allocated for development in the Regulation 18 Local Plan may start submitting planning applications in advance of the Local Plan being adopted which relates to the point above about being able to maintain a 5 year housing land supply.
- 9.4 The LDS at Appendix 2 includes a matrix at Table 1 which identifies a range of potential risks involved with preparing a Local Plan, their impact and likelihood of occurrence together with contingency and mitigation measures. A more detailed risk assessment will need to be prepared as there are a several strands of work that need to align for the delivery of this revised timetable.

Risk	Mitigation	Opportunities
Financial Exposure	Funding for the preparation of the Local Plan comes out of Local Plan budget and vacancy savings across Built Environment Service. Funding for Local Plan Review is expected to be covered by the earmarked reserve which	Joint commissioning of research with neighbouring authorities for example, through the Partnership with South Hampshire (PfSH).

	<p>have been increased to consider new Evidence Base that needed to be commissioned in order for the Local Plan to be adopted.</p>	
Exposure to challenge	<p>Ensure the Plan making process follows national planning legislation. Furthermore, the draft Local Plan has been subject to review by Counsel who has been retained by the Council to assist Officers with the production of the Local Plan and the Local Plan Examination. The longer it takes for the Local Plan to be adopted the longer it will take to start implementing new Local Plan policies such as the policies on energy efficiency standards and raising the bar on design issues.</p> <p>In order to help reduce the risk of challenge, a PINS Advisory meeting took place on the 15th June 2023. The meeting discussed the emerging Local Plan and representations/issues that came out of the Regulation 18 Local Plan consultation process.</p>	<p>There is great opportunity through the Local Plan making process to engage with a wide range of people on the future development of the district.</p>
Innovation	<p>Ensuring that the Council is creative in the way that it engages with as many people as possible and reaching out to hard to reach groups is a key part of the Local Plan process. Publicity and the methods</p>	<p>The opportunity has been taken to change the presentation of the Local Plan to make it more appealing and interesting to a wide range of audiences. Several changes have been made</p>

	<p>of Local Plan engagement will be a key component of this. This needs to build on the RTPI awards that given for the local plan engagement strategy that was developed for the Strategic Issues and Priorities public consultation.</p>	<p>to the stand-alone Local Plan website to support the branding 'Your Place, Your Plan' building upon the earlier success of the SIP consultation/Regulation 18 Local Plan consultation. This will be developed further with the publication of the Regulation 19 Local Plan.</p>
Reputation	<p>Producing a 'sound' Local Plan is one of the city council's biggest corporate priorities. The development of the Local Plan needs to undergo various statutory stages, and, in this respect, it is essential that there are various checks put in place to make sure that it follows the correct procedure. This includes asking for advice from a leading KC at key stages of the Local Plan process and allowing time for key parts of the Local Plan Evidence Base (e.g. the Strategic Transport Assessment) to be completed.</p>	<p>The preparation of the Local Plan is a great opportunity to reach out and engage with as many people as possible. Developing a new Local website and the Local Development Scheme and Local Plan are kept up to-date to ensure that the Council communicates when people can get involve and provide feedback on the Local Plan.</p> <p>Engaging with the local community is a real opportunity as it will clearly set out the Council vision for the district up to 2039 bringing with it certainty and investment to the area. The success of this public engagement process can then be replicated by other departments within the Council.</p>
Achievement of outcome	<p>The Plan needs to go through various statutory stages and it will be necessary to ensure that</p>	<p>The Council has declared a climate emergency and there is a great opportunity to provide</p>

	all of the appropriate steps are undertaken in order to provide a 'sound' Local Plan. This can only be achieved if the Local Plan is underpinned by an Evidence Base and sufficient time is allowed for this to be incorporated into the Local Plan.	leadership in terms of not only the presentation and policies of the Local Plan, which seek to reduce/minimise the impact of new development on the environment, but also how the Council engages with the local community and other interested parties.
Property	n/a	n/a
Community Support	Develop a Local Plan programme that allows sufficient time for the consultation and assessment of responses to the consultation and other subsequent key stages that require further consultation. The Local Plan process is required to comply with several statutory stages of publication. Officers will learn from the previous consultation and identify a range of different engagement methods that reach out to the widest range of people and stakeholders, local community groups	Ensure that the communication methods used for consultation are relevant to the task and ensure those interested in the plan making process are kept up-dated and are provided with opportunities to participate building on recent work undertaken by the Council such as the Winchester Vision 2030, the SIP and the Regulation 18 Local Plan consultation.
Timescales	Ensure that there is sufficient capacity in the Strategic Planning team to be able to progress the Local Plan and timings are realistic as set out in the Local Development Scheme. Using additional temporary resources to keep the Local Plan on the project timetable on track if required although	The LDS needs to be kept up-to date and adjusted if necessary to take into account and address new issues such as nutrients.

	this is becoming increasingly harder due to the lack of people with Local Plan experience.	
Project capacity	Ensure that the necessary resources are available. See above commentary on Timescales and Financial Exposure	Work with colleagues, neighbouring authorities through joint commissioning of evidence studies including, for example, the work on PfSH.

10 SUPPORTING INFORMATION:

10.1 **Regulation 19 Local Plan**

10.2 The Regulation 19 Local Plan will need to be agreed by Cabinet/Full Council as this is the version of the Local Plan that the Council would like examined. In order to avoid the situation that the Local Plan is found 'unsound' by an Inspector all of the necessary evidence base and various documents that need to be prepared (e.g. Statements of Common Ground) need to be completed and available on the Council website. This is why all the evidence base needs to be up to date and matters such as fulfilling the Duty to Cooperate need to be completed as these matters cannot be resolved at the Local Plan Examination.

10.3 Due to factors which are listed below a revised LDS being proposed in this paper is recommending:

- a) From Quarter 2 (July to September) 2023 to Quarter 4 (January to March) 2023/24 – completion of the work that is outlined in paragraphs 10.12 -10.48 of this Report.
- b) Quarter 1 (April to June) 2024 – approval sought from Cabinet/Full Council to consult on the Regulation 19 Local Plan.
- c) Quarter 2 (July to September) 2024 – public consultation on the Regulation 19 Local Plan.
- d) Quarter 3 (October to December) 2024 – submission of the Local Plan to the Planning Inspectorate.
- e) Quarter 4 (Jan to March) 2024/25 – Local Plan Examination.
- f) Quarter 1 (April to June) 2025 – Consultation on the Main Modifications.
- g) Quarter 3 (Oct to Dec) 2025 – Inspector's Report
- h) Quarter 3 (Oct to Dec) 2025 – Adoption of the Local Plan.

10.4 These key stages are outlined in a diagram in the LDS that is attached at Appendix 2.

10.5 **What is the purpose of the LDS?**

- 10.6 The LDS is effectively a project plan that sets out the timetable to produce the Local Plan. The LDS is required under Section 15 of the Planning and Compulsory Purchase Act 2004 (as amended by the Localism Act 2011). The LDS must specify (among other matters) the documents which, when prepared, will comprise the Local Plan for the area. It must be made publicly available on the Council's website and be kept up-to-date to enable local communities and interested parties to keep track of progress.
- 10.7 The LDS is important in the context of communication and transparency. The local community, businesses and others with an interest in the future planning of the District must be properly informed of the planning documents that the Council intends to produce and the timescale for their preparation, consultation and adoption.
- 10.8 Consultations on the Local Plan will continue to be advertised and interested parties notified in accordance with the Council's Adopted Statement of Community Involvement. The LDS provides information about when consultations are likely to happen.
- 10.9 The LDS is also a useful tool for establishing and reflecting the Council's priorities and enables work programmes to be set for the preparation of planning documents. It also provides a context for the review of planning documents once they have been prepared.
- 10.10 **The existing LDS**
- 10.11 The current LDS was last updated in July 2021 which is available on the Local Plan website [Local Development Scheme 2021 - Winchester City Council](#). This document identifies that public consultation on the Regulation 19 Local Plan would take place in August/September 2023 and the Local Plan would be adopted in August 2024.
- 10.12 It is important to note that there was a 3 month delay in consulting on the Regulation 18 Local Plan from the current timetable in the LDS. This was due to the introduction of the requirement of Natural England under the Habitats Regulations Assessment to be able to demonstrate nutrient neutrality and the Council giving Parish/Town Councils longer to identify sites in their settlements for development. Despite the best efforts of the Strategic Planning Team to keep Local Plan timetable on track, the public consultation dates for the Regulation 19 Local Plan and the date of the adoption of the Local Plan in 2024 are no longer achievable for the reasons set out in paragraphs 10.13 – 10.44.
- 10.13 **What factors resulted in the need for a revised Local Plan timetable?**
- 10.14 **Regulation 18 Local Plan consultation**
- 10.15 Consultation on the Regulation 18 Local Plan did take place in November/December 2022. The high level result of this public consultation have been reported to a meeting of the Local Plan Advisory Group on the 8th March 2023.

10.16 A total of 3,438 written comments were submitted on the Local Plan policies and site allocations that were included in the Regulation 18 Local Plan from 967 responses from individuals, business, organisations, and charities across the Winchester District. It is important to note that there are considerably more comments than this as often people have made more than one comment on a particular policy. The number and the technical nature of the representations have meant that it has taken longer to analyse and identify changes to the draft policies that was originally allowed for in the current LDS.

10.17 Officers from the Strategic Planning Team are now:

- finalising Officer analysis and preparing a series of recommended changes to the policies/text and any allocations as a result of the representations that will need to be agreed with Members via the Local Plan Cabinet meeting/Full Council;
- identifying and commissioning any new areas of evidence base that has been a result of the representations on the Regulation 18 Local Plan; and
- concluding a number of initial meetings with the statutory agencies (e.g. Natural England, Environment Agency and Historic England) in order to help to clarify their representations.

10.18 Prior to consultation on the Regulation 19 Local Plan Officers needs to progress with preparing several Statement of Common Grounds (SoCG's) which need to be agreed with the statutory agencies and neighbouring Local Planning Authorities. These will be accompanied by a Duty to Co-operate Statement. This is a key piece of work that Officers have been unable to progress as Officers have been working on several other areas of work. SoCG's are extremely important as the Council will need to be able to demonstrate to an Inspector at the Local Plan Examination that the preparation of the Local Plan has complied with the legislation. A separate SoCG is being agreed with the Partnership for South Hampshire authorities (PfSH).

10.19 In addition to analysing the representations and preparing the SoCG's, there are several other further technical work streams that are currently being undertaken by the Strategic Planning team following the Regulation 18 public consultation which are listed in Appendix 1. For ease, the main areas of work have been summarised below.

10.20 **Nutrient neutrality**

10.21 The Winchester district falls within three riverine catchments in relation to nutrient neutrality. This includes the East Hampshire catchment and the Test and the Itchen catchments.

10.22 In November 2018 the European Court of Justice issued a ruling 'Dutch N' which confirmed the need for nutrient neutrality. In 2019 Natural England issued guidance to 32 Local Planning Authorities (LPAs), including

Winchester City Council, adding nutrient neutrality in relation to total nitrogen as a requirement for overnight accommodation that impacts EU/nationally protected sites in the Solent. The Partnership for South Hampshire (PfSH) started working on developing total nitrogen mitigation solutions which became available across the Solent in 2021.

- 10.23 In March 2022 Natural England issued additional guidance to a further 42 LPAs in respect to nutrient neutrality for habitat sites. The guidance introduced phosphorus neutrality in relation to the Itchen catchment as a requirement for overnight accommodation. This means that any new overnight accommodation in the Itchen catchment is required to mitigate the impacts of phosphorus as well as total nitrogen.
- 10.24 The Solent has recognised problems from nitrate enrichment. High levels of nitrogen from human activity and agricultural sources in the catchment have caused excessive growth of green algae (a process called eutrophication) which is having a detrimental impact upon protected habitats and bird species. Accordingly, to meet the requirements, the Habitats Regulations Assessment it will be essential that the IIA, which is being prepared alongside and informs the content of the Local Plan, calculates and refers to a solution to the demands of nutrients (nitrogen and phosphates) as a result of housing growth that has been allocated for development in the Local Plan.
- 10.25 There have been numerous positive discussions taking place with Officers from PfSH to identify and find solutions to nutrients. Whilst there are now several successful trading platforms for nitrates, dealing with phosphorous is more challenging.
- 10.26 Developers and site promoters have been asked as part of the Site Deliverability Statements, to identify how they intend to address nutrients for the allocated sites in the Regulation 18 Local Plan. Funding bids have been submitted by PfSH to the government to help fund potential solutions and a decision is awaited. However, at this moment in time for the purposes of Plan-making, the LPA is currently unable to identify a deliverable solution for nutrient neutrality to deliver the housing in the Local Plan. This is a key area of work that still needs to be resolved over the coming months to meet the requirements of the Habitat Regulations Assessment. As a result of this, the Local Plan timetable has been revised to allow more time for this to happen.
- 10.27 Town Centre and Employment Study**
- 10.28 As indicated in paragraph 1.8 as both the Retail and Employment studies are currently being refreshed and updated as they were both completed at the outbreak of the COVID 19.
- 10.29 Whilst the current LDS was prepared after the outbreak of the COVID-19 the full implications of the pandemic, in terms of the impact on the high streets and the economic ramifications, were far more far reaching than were first imagined which has resulted in the need to ensure that these studies are updated. The revised LDS has factored in when the findings from these key

two reports will be made available and how the findings can be incorporated in the Regulation 19 Local Plan.

10.30 **Strategic Transportation Assessment.**

10.31 A meeting was convened the first week of January 2023 with Officers from the Strategic Planning team and Officers from Hampshire County Council (HCC) trading arm to discuss and agree the technical requirements of undertaking a Strategic Transport Assessment to support the next stage of the Local Plan. HCC trading arm were identified as being the most appropriate and efficient organisation to do this work as they have successfully completed similar work for other neighbouring Local Planning Authorities and they have a close working relationship with SYSTRA who hold the transport model. However, it took HCC trading arm several months to provide Officers with a fee proposal to undertake the necessary work. When the fee proposal did arrive the cost of undertaking this commission was considerably more than initial discussions with HCC had indicated (which meant that agreement had to be sought had to be sought to cover the budget deficit). The quote for the completion of the work was also over a much longer time period than had been originally been discussed.

10.32 Following the final agreement with the time scale and the cost of this commission, the trading arm of Hampshire County Council have been appointed to prepare a Strategic Transport Assessment. This will assess and propose appropriate mitigation for the cumulative transport impacts of the proposed site allocations that contained within Winchester City Council's emerging Local Plan. The commission will use the existing SYSTRA report <https://www.localplan.winchester.gov.uk/LibraryAssets/attach/42/109282-001b-SYSTRA-WCC-Local-Plan-2038-Stage-1-Transport-Assessment-Final-with-Apps-23092020-2-.pdf> as a starting position. The work will involve undertaking transportation modelling and preparing an accompanying report through the Solent Sub Regional Transport Model (SRTM) and it will include sites with extant planning permission and sites that are being built out. This evidence will support the Local Plan and be a robust part of Local Plan Evidence Base that can be relied on at the Local Plan Examination. The work involves undertaking:

- A baseline transport model run (no site allocations, the baseline position in 2039);
- A do-minimum transport run (with site allocations but with no mitigation);
- A do-something transport run (with site allocations and associated mitigation); and
- engagement with the relevant Highway Authorities to be able to demonstrate the Duty to Cooperate.

10.33 Traffic data that is gathered from the above transport model is required to quantify likely impacts and confirm which roads within 200m of a European

site will experience significant increases in traffic because of the Local Plan (alone or in combination). If traffic data shows an increase in traffic on roads passing European sites of 1,000 Annual average daily traffic or more, air quality assessment would then be required to inform the Appropriate Assessment.

10.34 As it is extremely important that the cumulative impact of the Local Plan site allocations is fully assessed, and appropriate mitigation measures are identified and costed into the Local Plan Viability Assessment. The timetable for the completion of this work has also had a significant impact on the LDS as this key piece of work will now not be completed until the end of April 2024. The timetable for completion of this Strategic Transport commission has now been factored into the revised LDS.

10.35 **Statement of Community Involvement (SCI)**

10.36 In preparing the Local Plan the Council must also legally comply with its own statutory Statement of Community Involvement (SCI), which the Council adopted in December 2018.

10.37 The Council is very keen to continue to engage with the widest possible audience and it is extremely important that the SCI is kept up-to-date in terms of how we are going to do this in a post COVID world. Allied to this the government requires SCI's to be updated every 5 years, which is another reason why this document is currently being reviewed and updated by Officers. This will involve obtaining permission from Cabinet for consultation to be held on a recommended revisions to the SCI, time for Officers time to analyse any comments and enough time for Officers to make any changes resulting from the public consultation before seeking Cabinet's permission to adopt a revised SCI. In order to help to de-risk the Local Plan process all of this work has been factored into the revised LDS.

10.38 **Meetings with the Department of Levelling, Housing and Communities (DLUHG)**

10.39 Two meetings have taken place with the Department of Levelling, Housing and Communities (DLUHC) in order to keep them up-to-date with progress on the Local Plan and to discuss the key challenges that the Council is facing with bringing the new Local Plan forward.

10.40 **Local Plan Planning Inspectorate (PINS) Advisory meeting**

10.41 In order to help to de-risk the Local Plan Examination process, Officers from the Strategic Planning team took up offer from DLUHC to convene a PINS Advisory meeting on the 15th June 2023.

10.42 The purpose of a PINS Advisory meeting is to provide a Local Planning Authority (LPA) with advice on their emerging Local Plan and its evidence base and to help the LPA prepare for the examination. Advisory meetings are not compulsory, but most LPA's find that they make a positive contribution to the examination of the Local Plan. The Advisory meeting is used to:

- The LPA's overall approach (particularly if the meeting takes place at an early stage);
- Issues relevant to the soundness and/or legal compliance of the emerging plan, focussing on the issues identified by the LPA;
- The duty to co-operate;
- The adequacy of the evidence base;
- Whether topic or background papers are needed to explain the LPA's approach to key issues; and
- What to expect during the examination

10.43 A Planning Inspector was appointed by PINS to conduct the Local Plan Advisory meeting. The meeting which was attended by Officers of the Council and the Cabinet Member for Place and Local Plan. The meeting provided the opportunity to raise several key questions that the team wanted to discuss with the Inspector which have arisen from the Regulation 18 Local Plan consultation, the Local Plan process and the Local Plan Evidence base.

10.44 **Matters that were discussed with the Inspector included:**

- Approach towards Duty to Cooperate;
- Local Plan Period;
- Standard Method (SM) and affordable housing;
- Unmet needs;
- Phasing;
- Housing Supply;
- Plan Strategy and site selection;
- Habitats Regulation Assessment;
- Gypsies and Travellers provision;
- Neighbourhood plans;
- Approach towards nutrients; and
- Carbon neutrality and low carbon infrastructure.

10.45 These two additional steps that have been outlined in paragraphs 10.37 – 10.44 were not planned for in the current LDS, which we have added to ensure we work with national support and the highest quality Local Plan is produced and submitted for examination to the Planning Inspectorate.

10.46 Planning Advisory Service (PAS)

10.47 In recognition that the Local Plan timetable needed revising, Officers contacted PAS as they provide free consultancy and peer support to help local authorities prepare Local Plans. DAC Planning were subsequently appointed by PAS to conduct an independent review of a draft Local Plan timetable and to identify whether the Local Plan could be brought forward any quicker and whether enough time had been allowed in the process to complete all of the necessary steps to prepare a ‘sound’ Local Plan.

10.48 The advice from DAC has been discussed internally and with the Cabinet Member for Place and the Local Plan and taken into account when putting together a revised LDS.

10.49 Revised timetable

10.50 The proposed revised LDS for approval is at Appendix 2.

10.51 The timetable for the consultation on the Reg 19 Local Plan, the submission of the Local Plan and the Local Plan Examination have all been revised to allow time to complete all of the above evidence base and to take into account all of the factors and the challenges that have been listed above.

10.52 The timetable for the Local Plan now identifies that public consultation on the Regulation 19 Local Plan that is required under the Town and Country Planning (Local Planning) Regulations 2012, will now not take place until early summer 2024. Whilst every effort continues to be made to progress the Local Plan, the timetable beyond Regulation 19 stage is, in part, dependent on a number of external factors such as the content of the representations on the Regulation 19 Local Plan, any changes to national policy and availability of the Planning Inspectorate to convene the Local Plan Examination.

10.53 Once agreed by Cabinet, a copy of the revised LDS will be placed on the Council’s website.

11 OTHER OPTIONS CONSIDERED AND REJECTED

11.1 Members could decide to not revise the LDS but would not be in accordance with the Council’s adopted SCI. The LDS is a keyway of informing everyone when the next stage of public consultation on the Local Plan is likely to happen and it is a statutory requirement to have an up-to-date LDS it is not the recommended option. As indicated in paragraph 3.1, on day 1 of the Local Plan Examination, a key question the Inspector will ask is whether the Local Plan has been produced in accordance with the Council’s adopted SCI and the LDS. As this is a key test of soundness, this reiterates the need to have an up-to-date LDS.

BACKGROUND DOCUMENTS:-

Previous Committee Reports:-

CAB32226 – Development Scheme January 2020.

Other Background Documents:-

CAB3357 – Local Plan Regulation 18 Consultation October 2022.

APPENDICES:

Appendix 1 – Local Plan evidence base that is currently underway

Appendix 2 – Winchester District Local Development Scheme 2023

Appendix 3 – Equalities Impact Assessment

Appendix 1 - Local Plan evidence base that is currently underway

Report	Progress
Site deliverability statements	Site promoters/owners of sites that were included in the Reg 18 Local Plan have been contacted in order to understand any constraints, infrastructure requirements and how they intend to deal with nutrients.
Strategic Transport Assessment	HCC (trading arm) have been appointed to undertake a transport assessment of the Local Plan site allocations.
Employment and Town Centre Study	Lambert Smith and Hampton have been appointed and studies are well underway with updating the 2020 reports.
Strategic Flood Risk Assessment (SFRA)	There is an existing SFRA which is currently being updated by AECOM who have been commissioned through PfSH to prepare a district wide SFRA.
Sequential assessment of site allocations	A meeting has been held with the Environment Agency (EA) and a site sequential report will need to be prepared and agreed with the EA.
Infrastructure Delivery Plan (IDP)	A draft IDP has been prepared and infrastructure providers are being contacted. An infrastructure workshop has taken place with HCC on the 2 nd June 2023 to discuss their specific infrastructure needs.
The need for student accommodation	The two universities in Winchester have been contacted to establish the demand for student accommodation. Discussions have also taken place with Sparsholt College to understand their accommodation needs.
Updated SHELAA	An updated SHELAA has been taken to the 18 th July Cabinet meeting.
Update the Statement of Community	Work is underway on reviewing and

Involvement (SCI)	updating the contents of the SCI. The updated SCI will need to be consulted on.
Review and test the development strategy including the settlement hierarchy, contribution to PfSH unmet needs, and updating all the housing figures	This work is ongoing.
Nutrient Neutrality Report	Working with PfSH a Local Plan nutrient neutrality assessment is currently being undertaken which will need to be agreed with Natural England and the Environment Agency.
Embodied Carbon Report	Consultants have been appointed to assess the various options that could be open to the city council to tackle embodied carbon and to recommend how this could be included in the Local Plan.
Approach towards Gypsy and Travellers	The Gypsy and Traveller Accommodation Needs Assessment has identified an overall need for gypsy and travellers. Further work to be undertaken on how this need should be approached.

YOUR PLACE YOUR PLAN.

Winchester District Local Plan

Local Development Scheme

August 2023



Winchester
City Council

CONTENTS

Page.

1.0 Introduction	1
2.0 Background	2
3.0 Other relevant documents (SCI, AMR, CIL)	4
4.0 The emerging Development Plan	5
5.0 Stages in the Local Plan preparation	7
6.0 Strategic Environmental Assessment and Sustainability Appraisal	10
7.0 Delivery and Implementation	10
8.0 Monitoring and Review	11
9.0 Duty to cooperate / Statement of Common Grounds	11
10 Risk Assessment	11

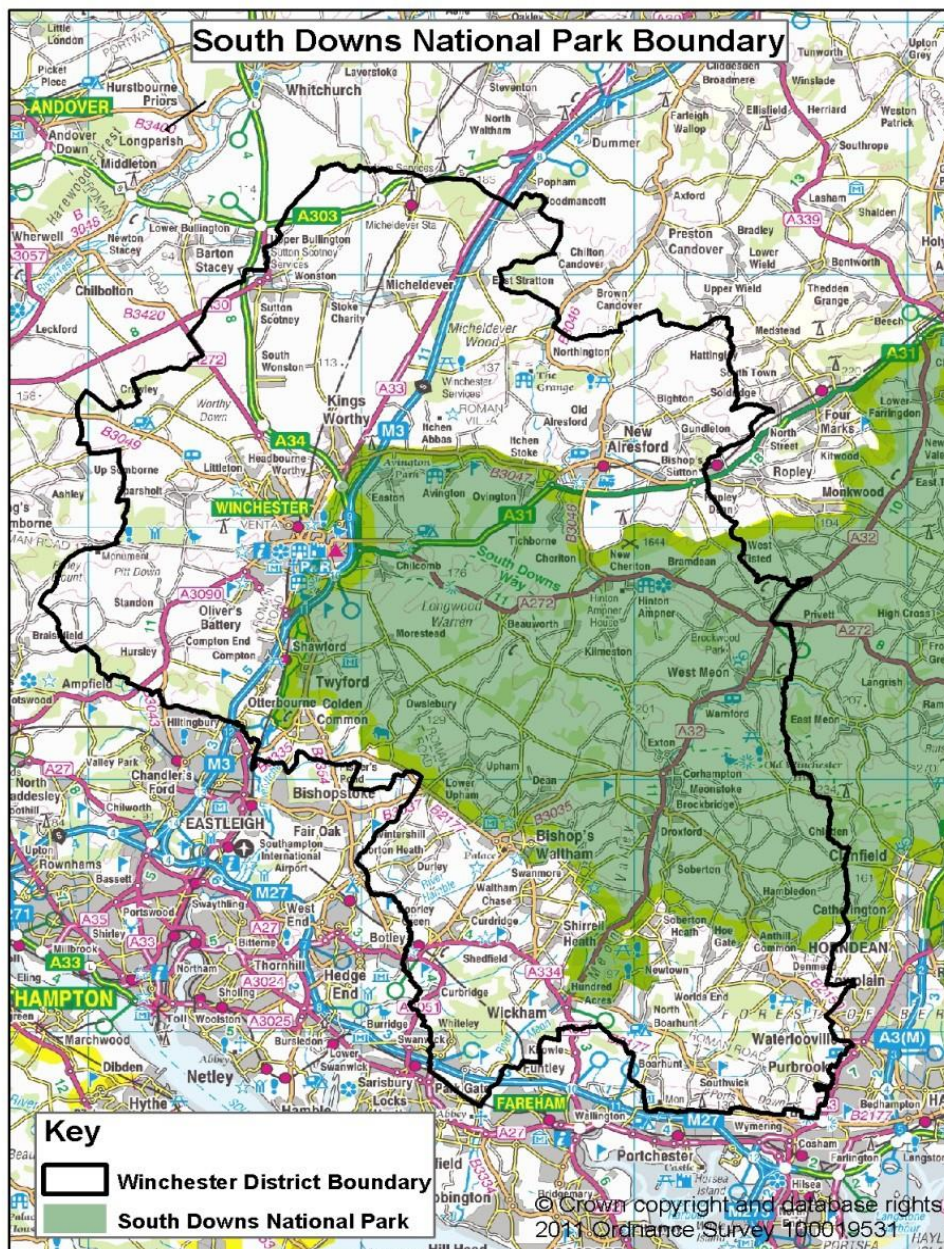
APPENDIX A - Risk Assessment

APPENDIX B - Local Plan Programme

1.0 Introduction

1.1 Winchester City Council is required to prepare, update and publish a Local Development Scheme (LDS) in accordance with the Planning and Compulsory Purchase Act 2004 (“the Act”) (as revised by the Localism Act 2011).

1.2 This LDS covers the administrative area of Winchester that falls outside the South Downs National Park (which produces its own Local Plan) and sets out which planning policy documents the council intends to produce, and the timetable for producing these documents. The map below shows the boundary of Winchester City Council and the South Downs National Park.



OK

1.3 The Act (as amended by the Localism Act 2011) states that a Local Development Scheme must specify:

- The Local Development Documents which are to be Development Plan Documents;
- The subject matter and geographical area to which each development plan document relates;
- Which Development Plan Documents, if any, are to be prepared jointly with one or more other local planning authorities;
- Any matter or area in respect of which the authority has agreed (or proposes to agree) to the constitution of a joint committee [with other Local Planning Authorities]; and
- The timetable for the preparation and revision of the Development Plan Documents.

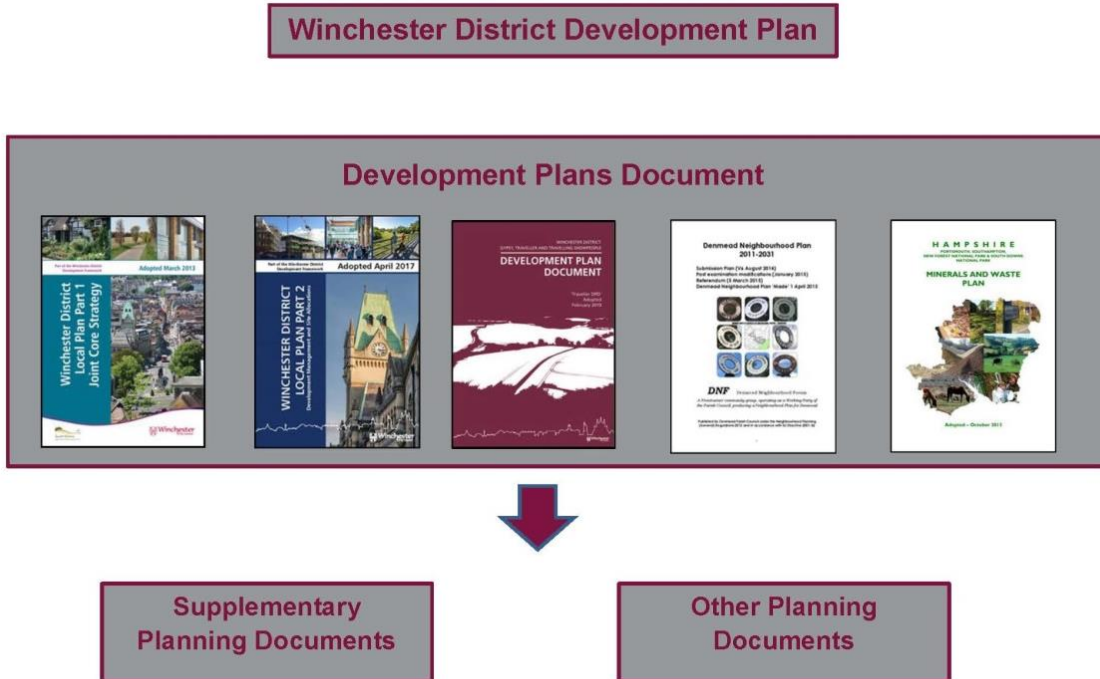
2.0 Background.

2.1 The current Development Plan Documents for Winchester District comprise:

- **The Winchester District Local Plan Part 1 - Joint Core Strategy (LPP1).** The LPP1 was prepared by Winchester City Council (WCC) and the South Downs National Park Authority (SDNPA). It was adopted by WCC in March 2013. This plan covers the entire geographical area of Winchester District including the SDNP (the SDNP section of the Local Plan has now been superseded by their National Parks adopted Local Plan) and provides the strategic policies for the area.
- **The Local Plan Part 2 - Development Management and Site Allocations (LPP2).** This local plan covers the parts of the district that lie outside the SDNP and are administered by WCC as local planning authority. It provides site allocations and detailed policies relating to development management. LPP2 was adopted in April 2017.
- **The Denmead Neighbourhood Plan;** The plan covers most of the parish of Denmead. This is the only Neighbourhood Plan in the district that has been “made” (1 April 2015). Denmead Parish Council have indicated an intention to review their plan in line with the Local Plan process.
- **The Gypsy and Traveller and Travelling Showpeople DPD (G&T DPD).** Local Authorities are required by Central Government to assess the accommodation requirements of Gypsy and Travellers and to develop a strategy that addresses any unmet need. It was adopted as a Development Plan Document in February 2019.

- The Hampshire Minerals and Waste Plan.**
 This plan is produced jointly by Hampshire County Council (HCC), Southampton City Council, Portsmouth City Council and South Downs and New Forest National Park Authorities. The plan covers the entire county.

The diagram below shows the current Local Plan documents for Winchester District.



2.2 This LDS is effectively a timetable for preparing the new Local Plan which will cover the period to the adoption of the new Local Plan. It also includes an assessment of identified risks and contingencies as part of ongoing programme management. There is no requirement for Supplementary Planning Documents (SPD) to be included in the LDS. However, the council will continue to produce SPDs where appropriate. There is a list of all adopted SPDs on the council's website <https://www.winchester.gov.uk/planning-policy/supplementary-planning-documents-spds>

3.0 Other relevant documents.

3.1 The Statement of Community Involvement (SCI) was adopted on 3 December 2018. The SCI provides the framework within which the public will be consulted on the preparation of policy documents and planning applications and states how the local authority intends to achieve this involvement. There is currently a process currently underway to review the SCI to ensure that it complies with the latest best practice and reflects the methods of engagement that are being used to promote planning applications/Local Plan documents.

3.2 The Authorities' Monitoring Report is updated yearly and provides updates on the status of the LDS timetable and progress of the new Local Plan <https://www.winchester.gov.uk/planning-policy/annual-monitoring-report-amr> It also reports on public consultations and duty to cooperate consultations, updates on neighbourhood planning within the district and key statistics on planning topic areas such as housing, employment, population, community, health, education, environment and transport.

3.3 The Community Infrastructure Levy (CIL) is the mechanism whereby funds are raised from development for essential infrastructure as set out in the Infrastructure Funding Statement. CIL is charged per square metre on the gross internal floor space of the net additional floor space created by development and is applicable to all new residential developments, excluding the major development areas (MDAs) at Kings Barton (Winchester), Newlands (Waterlooville) and North Whiteley, regardless of size and to other specified types of development of 100 square metres or over. The delivery of infrastructure at the MDAs is covered by planning obligations (s106 agreements) which were put in place when permission was given for these developments. More information on the CIL is available on the council's website <https://www.winchester.gov.uk/planning/cil/>

4.0 The emerging Development Plan.

4.1 The Regulation 18 Local Plan has set out the vision and framework for future development of the district (which lies outside the SDNP) to 2039. When the new Winchester District Local Plan has been adopted the development plan will comprise The Winchester District Local Plan, The Hampshire Minerals and Waste Plan 2013, and any other Neighbourhood Plans which might be “made”.

4.2 The Regulation 18 Local Plan has been prepared through the climate emergency lens and has raised the bar on design issues as well as addressing local housing need, the economy, environmental considerations, community infrastructure and strategic infrastructure needs. The plan includes site specific allocations to meet identified need. The plan is structured around a number of topics which have the series of policies that will be used to guide the determination of planning applications.

4.3 **Nutrient neutrality**

4.4 The Winchester district falls within three riverine catchments in relation to nutrient neutrality. This includes the East Hampshire catchment and the Test and the Itchen catchments.

4.5 In November 2018 the European Court of Justice issued a ruling ‘Dutch N’ which introduced the concept of nutrient neutrality. In 2019 Natural England issued guidance to 32 Local Planning Authorities, including Winchester City Council, adding nutrient neutrality in relation to total nitrogen as a requirement for overnight accommodation that impacts protected sites in the Solent. The Partnership for South Hampshire (PfSH) started working on developing total nitrogen mitigation solutions which became available across the Solent in 2021.

4.6 In March 2022 Natural England issued additional guidance to a further 42 LPA’s in respect to nutrient neutrality for habitat sites. The guidance introduced phosphorus neutrality in relation to the Itchen catchment as a requirement for overnight accommodation. This means that any new overnight accommodation in the Itchen catchment is required to mitigate the impacts of phosphorus as well as total nitrogen.

4.7 The Solent has recognised problems from nitrate enrichment. High levels of nitrogen from human activity and agricultural sources in the catchment have caused excessive growth of green algae (a process called eutrophication) which is having a detrimental impact upon protected habitats and bird species. Accordingly, in order to meet the requirements the Habitats Regulations Assessment it will be essential that the IIA, which is being prepared alongside and informs the content of the Local Plan, calculates and refers to a solution to the demands of nutrients (nitrogen and phosphates) as a result of housing growth that has been allocated for development in the Local Plan.

4.8 There have been numerous positive discussions taking place with Officers from PfSH in order to identify and find solutions to nutrients. Whilst there are now

a number of successful trading platforms for nitrates, dealing with phosphorous is more challenging.

4.9 Developers and site promoters have been asked as part of the Site Deliverability Statements, to identify how they intend to address nutrients for the allocated sites in the Regulation 18 Local Plan. Funding bids have been submitted by PfSH to the government to help fund potential solutions and a decision is awaited.

4.10 Town Centre and Employment Study

4.11 Both the Retail and Employment studies are currently being refreshed and updated as they were both originally completed at the outbreak of the COVID 19 pandemic. The revised LDS has factored in when the findings from these key two reports will be made available and how the findings can be incorporated in the Regulation 19 Local Plan.

4.12 Strategic Transportation Assessment.

4.13 The trading arm of Hampshire County Council have been appointed to prepare a Strategic Transport Assessment. This will assess and propose appropriate mitigation for the cumulative transport impacts of the proposed site allocations that are contained within Winchester City Council's emerging Local Plan. The commission will use the existing SYSTRA report <https://www.localplan.winchester.gov.uk/LibraryAssets/attach/42/109282-001b-SYSTRA-WCC-Local-Plan-2038-Stage-1-Transport-Assessment-Final-with-Apps-23092020-2-.pdf> as a starting position and it will involve undertaking transportation modelling and preparing an accompanying report through the Solent Sub Regional Transport Model (SRTM) and it will include sites with extant planning permission and sites that are being built out. This evidence will support the Local Plan and be a robust part of Local Plan Evidence Base that can be relied on at the Local Plan Examination. The work involves undertaking:

- A baseline transport model run (no site allocations, the baseline position in 2039);
- A do-minimum transport run (with site allocations but with no mitigation);
- A do-something transport run (with site allocations and associated mitigation); and
- engagement with the relevant Highway Authorities in order to be able to demonstrate the Duty to Cooperate.

4.14 Traffic data that is gathered from the above transport model is required to quantify likely impacts and confirm which roads within 200m of a European site will experience significant increases in traffic as a result of the Local Plan (alone or in combination). If traffic data shows an increase in traffic on roads passing European sites of 1,000 Annual average daily traffic or more, air quality assessment would then be required to inform the Appropriate Assessment.

4.15 As it is extremely important that the cumulative impact of the Local Plan site allocations is fully assessed and appropriate mitigation measures are identified and costed into the Local Plan Viability Assessment. The timetable for completion of this Strategic Transport commission has been factored into the revised LDS.

4.16 Statement of Community Involvement (SCI)

4.17 The preparation of the Local Plan must also legally comply with its own statutory Statement of Community Involvement (SCI), which the Council adopted in December 2018. As the government requires SCI's to be updated every 5 years, this document is currently being reviewed and updated by Officers. This will involve obtaining permission from Cabinet for consultation to be held on a recommended revisions to the SCI, time for Officers time to analyse any comments and enough time for Officers to make any changes as a result of the public consultation before seeking Cabinet's permission to adopted a revised SCI. In order to help to de-risk the Local Plan process all of this work has been factored into the revised LDS.

5.0 Stages of Local Plan preparation.

5.1 There are a number of key stages that are involved with the preparation and the adoption of a Local Plan. Each of these stages are subject to the Strategic Environmental Assessment Directive (SEA). This information will be included under the umbrella of an Integrated Impact Assessment (IIA) which includes a Sustainability Appraisal, Habitats Regulations Assessment, Equality Impact Assessment and a Health Impact Assessment.

5.2 Pre-Regulation 18 stage

5.3 This is the initial stage involving evidence gathering and engaging with the local community, businesses and stakeholders, including statutory consultees and neighbouring local authorities. This process started with the Launch of the Local Plan in 2018.

5.4 The Launch of the Local Plan was followed by a high level consultation on a Strategic Issues and Priorities document which took place between February – April 2021. Information and feedback that was gained from this public consultation was used to inform the content of the Regulation 18 Local Plan.

5.5 Regulation 18 Local Plan.

5.6 Consultation on the Regulation 18 Local Plan took place between 2nd November and 14th December 2022. The consultation involved several drop-in sessions in towns and villages across the district supported by posters, a social media, radio and news-print advertising campaign. Online briefings with experts speakers were organised along with drop in sessions at local colleges and universities. Links to the online recordings can be found [here](#). The link to the draft local plan consultation document can be found [here](#). In total, the council received 967 responses from individuals, business, organisations, and charities across the Winchester District, with a total of 3,438 written comments on the Local Plan policies and site allocations.

5.7 A summary of the recent consultation and engagement for the Regulation 18 Local Plan consultation was the subject of the Local Plan Advisory Group meeting on 8th March.

5.8 Regulation 19 Local Plan.

5.9 Any proposed changes that result from the Regulation 18 consultation will be subject to a sustainability appraisal and Local Plan Viability Assessment before being consulted on again at the Regulation 19 consultation.

5.10 A final round of public consultation will take place in the form of a Regulation 19 Local Plan in terms of whether the draft plan is legally compliant and sound when assessed against the requirements that are contained in the National Planning policy Framework (NPPF).

5.11 Submission and Examination of the Local Plan (Regulations 22&23).

5.12 Following Regulation 19, the council will formally submit the final draft Local Plan, representations that have been received at the Regulation 19 stage and the evidence base to the Planning Inspectorate for examination on behalf of the Secretary of State. A Local Plan Examination will be convened which will be overseen by an independent Inspector who will assess the Plan against the tests of soundness and will take into account any representations received at the Regulation 19 stage. Whilst there is an opportunity for members of the public and organisations to attend the examination, the Inspector will determine the range of issue that they wish to discuss and who they would like to address the Inspector.

5.13 Consultation on any proposed Main Modifications.

5.14 The Inspector and the council may suggest modifications to the draft plan. If they are likely to affect the plan in a significant way, they will be regarded as “Main Modifications” and, if these are required, they will need to be consulted on and the representations reviewed and forwarded to the Inspector.

5.15 Inspector’s Final Report – Regulation 25.

5.16 The Inspector will issue a Final Report and providing that the Plan is found to the 'sound', the council may adopt the Plan as soon as practicable following receipt of the Inspector's report unless the Secretary of State intervenes. Once adopted the Local Plan will form the main part of the statutory development plan.

5.17 Appendix B sets out the updated timetable for the adoption of the Local Plan. The key steps that are involved with preparing a Local Plan are outlined below.

Document Details

Sustainability Appraisal and Habitats
Regulations Assessment of the Local Plan



6.0 Strategic Environmental Assessment (SEA) and Sustainability Appraisal (SA).

6.1 Achieving sustainable development is at the heart of the emerging new Local Plan and the planning system and is extremely important given that the council has declared a Climate Emergency. Tackling this issue and creating a greener district are at the heart of the Council Plan 2020 - 2025.

6.2 In preparing Local Plan and associated documents, attention will also be given to the expected environmental outcome of proposed plans and will be subject to Sustainability Appraisal (SA). A European Union Directive (July 2006) requires that all plans likely to have significant effects on the environment must incorporate a Strategic Environmental Assessment (SEA).

6.3 The SA process examines the concept of sustainability through consideration of social, economic and environmental impacts. Matters of health and equalities also need to be incorporated into integrated impact assessments for planning policy formulation. SEA involves the assessment of the environmental impact of the plan.

6.4 The Local Plan must also comply with the requirements of the European Community's Habitats Regulations on the conservation of natural habitats and of wild fauna and flora (Directive 92/43/EEC, May 1992). The 2017 Regulations provide for the designation and protection of 'European sites', the protection of 'European protected species', and the adaptation of planning and other controls for the protection of European sites.

6.5 Preparation of Local Plan provides an opportunity to update the SA/SEA/HRA frameworks to ensure that the processes are compliant with any legislative changes in light of recent High Court judgements and that any impacts from Brexit are reflected.

7.0 Delivery and Implementation.

7.1 Producing a new Local Plan is a key corporate priority. The preparation of the Local Plan will be led by the Strategic Planning Team but will embrace the work of a number of departments from across the whole of the council.

7.2 The development of the Local Plan is underpinned by an up to date evidence base. The council will work with other departments within the council, neighbouring authorities, Hampshire County Council, local communities and expert consultants to produce the technical background work which will form the evidence base for the new Local Plan. All of this evidence base is available on the council's dedicated Local Plan website [Home - Winchester District Local Plan](#) The evidence base will be submitted to the Inspector that is appointed to oversee the examination of the Local Plan and therefore needs to withstand close scrutiny at the Local Plan Examination.

7.3 The financial resources required to produce the evidence base have been estimated and provision made in the council's budget.

7.4 The council is satisfied that at the time of the preparation of the LDS

appropriate resources are available to deliver the timetable set out in Appendix B.

8.0 Monitoring and Review.

8.1 The council's Authorities' Monitoring Report (AMR) will monitor the progress of the LDS on an annual basis, reporting in December each year. The latest version is available to view on the council's website <https://www.winchester.gov.uk/planning-policy/annual-monitoring-report-amr> The AMR will compare progress against the key milestones set out in the LDS and consider the need to revise and update the LDS.

9.0 Duty to Co-operate and Statement of Common Grounds

9.1 The duty to cooperate places a legal duty on local planning authorities, county councils in England and public bodies to engage constructively, actively and on an ongoing basis to maximise the effectiveness of Local Plan preparation in the context of strategic cross boundary matters.

9.2 The duty to cooperate is not a duty to agree. But local planning authorities should make every effort to secure the necessary cooperation on strategic cross boundary matters before they submit their Local Plans for examination. Local planning authorities must demonstrate how they have complied with the duty at the independent examination of their Local Plans. If a local planning authority cannot demonstrate that it has complied with the duty then the Local Plan will not be able to proceed further in the examination process.

9.3 Local planning authorities will need to satisfy themselves about whether they have complied with the duty. As part of their consideration, local planning authorities will need to bear in mind that the cooperation should aim to produce effective and deliverable policies on strategic cross boundary matters.

9.4 The various meetings that have taken place in connection with the duty to cooperate are recorded annually in the council's AMR which is available on the council's website.

9.5 Prior to consultation on the Regulation 19 Local Plan a number of Statement of Common Grounds will be prepared and agreed with the statutory agencies and neighbouring Local Planning Authorities. These will be accompanied by a Duty to Co-operate Statement. This is a key piece of work as the Council will need to be able to demonstrate to an Inspector at the Local Plan Examination that the preparation of the Local Plan has complied with the legislation. A separate SoCG is being agreed with the Partnership for South Hampshire authorities (PFSH).

10.0 Risk Assessment.

10.1 The production of a Local Plan requires consideration of the potential risk involved in its preparation. These vary from local matters such as changes in staffing levels or political / administrative changes to those of regional or national significance including publication of revised government guidance and changes to the plan making system.

10.2 Appendix A identifies a range of potential risks, their impact and likelihood of occurrence together with contingency and mitigation measures.

Appendix A – Risk Assessment

What might go wrong?	What will happen?	Residual risk score	Current controls	Mitigation
A team member may Leave	A vacancy would be created in the team and depending on the level of seniority this would have different risk implications	Likelihood = Likely Impact = Major	Spread knowledge of the Local Plan and its associated documents throughout the team in order to minimize impact.	Re-appoint as soon as possible. If this is not possible, seek to re-deploy staff resources within Built Environment team. If this was not possible appoint someone on a short term as a Consultant although this would have financial implications and possible reputational damage.
Vacant post might not be filled	Unable to deliver the LP due to lack of resources	Likelihood = Likely Impact = Major	Seek to recruit in a timely manner to allow for a new member of staff to become familiar with WCC processes, prior to key stages of plan making.	Seek to recruit a temporary member of staff/agency staff with the necessary experience. Consider use of consultants where appropriate.
New national legislation	The Government introduces changes that significantly alter the way that Local Plans needs to be prepared	Likelihood = Highly likely Impact = Major	<p>The Government has, and continues to make a number of changes to the planning system, the National Planning Policy Framework and the Building Regulations. In addition to this there has been a number of public consultations on a number of key issues including for example, changes to CIL in the form of a Infrastructure Levy and the Environmental Outcomes Report.</p> <p>It is highly likely that other changes and guidance will happen within the next 2 - 3 year period as the Government has consulted on some radical changes to the form and content of Local Plans and the way they need to be prepared. There will be a series of changes to the</p>	<p>Include flexibility in the timescales for preparation of the Local Plan and associated documents to allow opportunity to respond to any changes.</p> <p>Adapt plan making to future proof the process as far as possible and implement changes without delay that align with the direction of travel set at national level.</p> <p>Monitor closely and respond to the outcome of the various consultations promptly and any pending changes at Infrastructure Level, where possible, prior to commencement of regulatory stages</p>

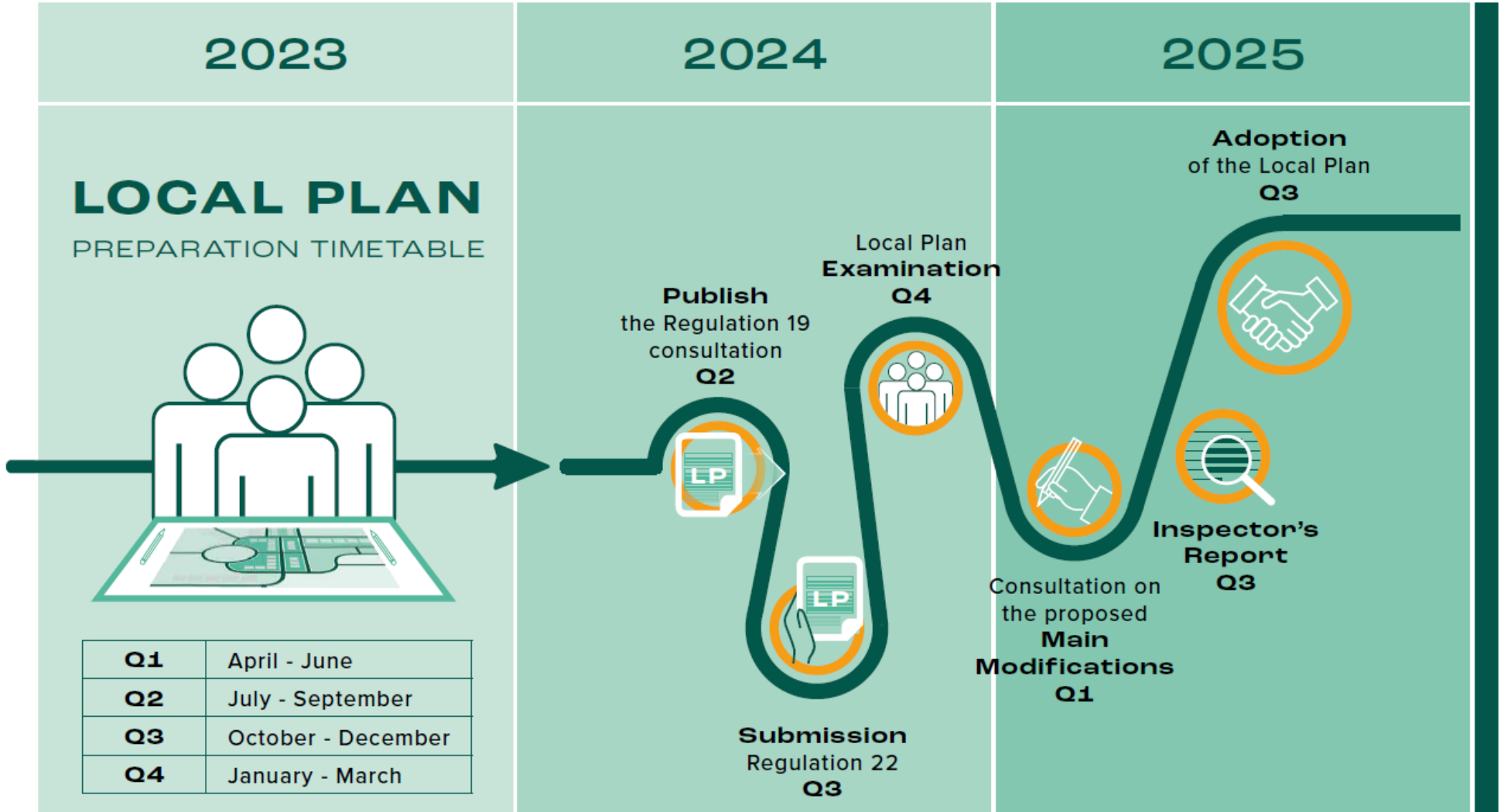
			<p>planning system that will come forward in the Levelling up Bill and changes on the horizon in updates to the NPPF and National Development Management policies.</p>	<p>of plan preparation process.</p> <p>Ensure documents are regularly updated to ensure compliance with legislation.</p> <p>National changes may be subject to transitional arrangements,</p>
<p>Legal challenge</p>	<p>A legal challenge could be submitted</p>	<p>Likelihood = Unlikely</p> <p>Impact = Major</p>	<p>Post adoption of a Local Plan, there is a six week legal challenge period. There is potential for newly- adopted plans to be challenged, placing a degree of uncertainty over the status of the policies and proposals.</p>	<p>To reduce risk of challenge, ensure the Local Plan is legally compliant, is based on robust evidence and has been subject to extensive consultation. The involvement of Counsel at key stages of the Local Plan process will help to minimize the risk of legal challenge.</p> <p>A PINS Advisory meeting was held on the 15th June 2023 in order to discuss a number of key issues and help to de-risk the Local Plan process.</p> <p>Robustly resist challenges made through the Courts unless there are clear and substantial legal reasons which mean the council is unlikely to be able to defend adoption of its Local Plan.</p>

<p>Problems arising from joint working; compliance with the duty to co-operate</p>	<p>It is not possible for an examining Inspector to 'correct' a failure to meet the Duty to Cooperate at the Local Plan examination, so this could have a serious impact.</p>	<p>Likelihood = unlikely Impact = major</p>	<p>Close working is therefore needed with other authorities through Partnership for South Hampshire (PFSH) and other direct channels, council Members and Counsel to detect issues early on in the process. The new NPPF has also introduced the requirement to produce Statements of Common Ground and, by agreement, meeting neighbours' unmet housing needs. A PINS Advisory meeting was arranged in order to help de-risk the LP process and discuss some of the key issues arising from the representations that have been raised in the Regulation 18 Local Plan consultation.</p>	<p>Some flexibility is included in the Local Plan timescales and allows for continuing discussions with neighbouring authorities to reach agreed positions.</p> <p>Ensuring that there is a clear document audit trail of any discussions and outcomes from those DTC meetings.</p> <p>The council is also represented on project boards / steering groups of major development sites and is a member of the Partnership for South Hampshire (PFSH).</p>
<p>Programme slippage</p>	<p>There could be delays to the Local Plan timetable due to Government reforms to the planning system or a large number of representations submitted that would delay the adoption of the LP. Any slippage in the Local Plan timetable could have financial implications in terms of the evidence base</p>	<p>Likelihood = Likely Impact = moderate</p>	<p>Contingency time is built into the LDS programmes, which includes sufficient time to deal with the large number of representations typically received at consultation stages.</p>	<p>Sufficient flexibility is included in the Local Plan timescales. Revise LDS where necessary. Ensure sufficient resources available to complete future stages (financial and staffing).</p>

	needing to be updated and this would need to be managed.			
Local Plan found not to be 'sound'	If the LP is found to be unsound or there was serious shortcomings with the LP work would need to halt and the problems would need to be addressed. Inability to maintain a 5 year housing land supply	Likelihood = Unlikely Impact = Major	Convening a PINS Advisory meeting on 15 th June 2023 has helped to de-risk the Local Plan Be prepared to make modifications to the plan at the Local Plan Examination. Develop and take account of sound evidence.	Develop sound and reliable technical evidence base. If necessary, go back to an earlier stage, revise the plan and re-submit.
Failure to secure timely provision of Infrastructure	Infrastructure issues are not clearly considered as part of the LP.	Likelihood = Highly unlikely Impact = moderate	Retain up to date evidence on infrastructure and liaise with infrastructure providers.	Continuing engagement with infrastructure providers to develop a Infrastructure Delivery Plan in order to ensure the timely provision of infrastructure.
Failure to secure agreement at Full Council to Local Plan	The LP needs to be agreed by Full Council at the Reg 19 stage and at the time that the LP is adopted.	Likelihood = Unlikely Impact = Major	It is important to work closely with all elected Members through the Local Plan Advisory Group and by other means, such as Councilor briefings, and to maintain awareness of the plan, and associated documents at each key stage of the process.	Build sufficient flexibility into the strategy and timescales.
Inspector's report includes recommendations that the council finds difficult to accept	Although the Inspector's recommendations are no longer binding (except for any modifications	Likelihood = Unlikely Impact = major	The council will need to consider all recommendations made by the inspector and may decide to accept them unless it considers there are sound and substantial reasons not to whilst acknowledging this could lead to	Keep council Members up to date on issues arising and likely recommendations and ensure each stage of the plan making process is evidence based, taking legal advice as required, to minimize the

	proposed by the council), the Plan may not be 'sound' unless it is modified.		a position where an up-to date-plan is no longer in place.	potential for the inspector to need to recommend significant changes to the draft plan.
--	--	--	--	---

Appendix B – Local Plan Programme



This page is intentionally left blank

Appendix 3

Winchester City Council

Equality Impact Assessment Template (EqIA)

Section 1 - Data Checklist

When undertaking an EqIA for your policy or project, it is important that you take into consideration everything which is associated with the policy or project that is being assessed.

The checklist below is to help you sense check your policy or project before you move to Section 2.

		Yes/No	Please provide details
1	Have there been any complaints data related to the policy or project you are looking to implement?	No	
2	Have all officers who will be responsible for implementing the policy or project been consulted, and given the opportunity to raise concerns about the way the policy or function has or will be implemented?	Yes	The Local Development Scheme (LDS) has been prepared by the Strategic Planning Manager in consultation with the Cabinet Member for Place and Local Plan.
3	Have previous consultations highlighted any concerns about the policy or project from an equality impact perspective?	No	Consultation on the Local Plan has been as inclusive as possible to ensure that any public consultation reaches out to the widest possible audience which include those with a protected interest. Ensuring that this happens was one of the key reasons why the consultation process on the Strategic Issues & Priorities document won two RTPI awards.
4	Do you have any concerns regarding the implementation of this policy or project?	No	

		Yes/No	Please provide details
	<i>(i.e. Have you completed a self-assessment and action plan for the implementation of your policy or project?)</i>		
5	Does any accessible data regarding the area which your work will address identify any areas of concern or potential problems which may impact on your policy or project?	No	
6	Do you have any past experience delivering similar policies or projects which may inform the implementation of your scheme from an equality impact point of view?	Yes	The LDS sets out when the Council will consult on the Local Plan. The Local Plan will be accompanied by an Equality Impact Assessment.
7	Are there any other issues that you think will be relevant?	No	

Section 2 - Your EqIA form

Directorate:	Your Service Area:	Team: Strategic Planning	Officer responsible for this assessment: Corinne Phillips	Date of assessment:
---------------------	---------------------------	---------------------------------	---	----------------------------

	Question	Please provide details
1	What is the name of the policy or project that is being assessed?	Local Development Scheme
2	Is this a new or existing policy?	The LDS was last updated in July 2021 and has been updated to reflect the key challenges that are facing the district with bringing forward a new Local Plan.
3	Briefly describe the aim and purpose of this work.	The Council is legally required to produce and keep up to date LDS that provides the timetable for the production and adoption of the Winchester District Local Plan.
4	What are the associated objectives of this work?	To provide a timetable for the preparation and adoption of the Local Plan.
5	Who is intended to benefit from this work and in what way?	The residents of Winchester district
6	What are the outcomes sought from this work?	To provide a timetable for the preparation and adoption of the Local Plan. Once agreed, the revised LDS would be placed on the WCC website. Anyone who has registered an interest in being updated on Local Plan issues would be notified via an email alert.
7	What factors/forces could contribute or detract from the outcomes?	N/A
8	Who are the key individuals and organisations responsible for the implementation of this work?	Strategic Planning Manager, Winchester City Council, Parish Councils, Hampshire County Council, landowners and developers.
9	Who implements the policy or project and who or what is responsible for it?	Strategic Planning Manager and Cabinet Member for Place and Local Plan

		Please select your answer in bold . Please provide detail here.		
10a	Could the policy or project have the potential to affect individuals or communities on the basis of race differently in a negative way?	Y	N	
10b	What existing evidence (either presumed or otherwise) do you have for this?	The LDS is a document that sets out the timetable for the preparation and adoption of the Local Plan.		
11a	Could the policy or project have the potential to affect individuals or communities on the basis of sex differently in a negative way?	Y	N	
11b	What existing evidence (either presumed or otherwise) do you have for this?	The LDS is a document that sets out the timetable for the preparation and adoption of the Local Plan.		
12a	<p>Could the policy or project have the potential to affect individuals or communities on the basis of disability differently in a negative way?</p> <p><i>you may wish to consider:</i></p> <ul style="list-style-type: none"> • <i>Physical access</i> • <i>Format of information</i> • <i>Time of interview or consultation event</i> • <i>Personal assistance</i> • <i>Interpreter</i> • <i>Induction loop system</i> • <i>Independent living equipment</i> • <i>Content of interview</i> 	Y	N	
12b	What existing evidence (either presumed or otherwise) do you have for this?	The LDS is a document that sets out the timetable for the preparation and adoption of the Local Plan.		

13a	Could the policy or project have the potential to affect individuals or communities on the basis of sexual orientation differently in a negative way?	Y	N	
13b	What existing evidence (either presumed or otherwise) do you have for this?	The LDS is a document that sets out the timetable for the preparation and adoption of the Local Plan.		
14a	Could the policy or project have the potential to affect individuals on the basis of age differently in a negative way?	Y	N	
14b	What existing evidence (either presumed or otherwise) do you have for this?	The LDS is a document that sets out the timetable for the preparation and adoption of the Local Plan.		
15a	Could the policy or project have the potential to affect individuals or communities on the basis of religious belief differently in a negative way?	Y	N	
15b	What existing evidence (either presumed or otherwise) do you have for this?	The LDS is a document that sets out the timetable for the preparation and adoption of the Local Plan.		
16a	Could this policy or project have the potential to affect individuals on the basis of gender reassignment differently in a negative way?	Y	N	
16b	What existing evidence (either presumed or otherwise) do you have for this?	The LDS is a document that sets out the timetable for the preparation and adoption of the Local Plan.		
17a	Could this policy or project have the potential to affect individuals on the basis of marriage and civil partnership differently in a negative way?	Y	N	
17b	What existing evidence (either presumed or otherwise) do you have for this?	The LDS is a document that sets out the timetable for the preparation and adoption of the Local Plan.		
18a	Could this policy or project have the potential to affect individuals on the basis of pregnancy and maternity differently in a negative way?	Y	N	
18b	What existing evidence (either presumed or otherwise) do you have for this?	The LDS is a document that sets out the timetable for the preparation and adoption of the Local Plan.		
19	Could any negative impacts that you identified in questions			

	10a to 15b create the potential for the policy to discriminate against certain groups on the basis of protected characteristics?	Y	N										
20	Can this negative impact be justified on the grounds of promoting equality of opportunity for certain groups on the basis of protected characteristics? Please provide your answer opposite against the relevant protected characteristic.	Y	N	<table border="1"> <tr><td>Race:</td></tr> <tr><td>Sex:</td></tr> <tr><td>Disability:</td></tr> <tr><td>Sexual orientation:</td></tr> <tr><td>Age:</td></tr> <tr><td>Gender reassignment:</td></tr> <tr><td>Pregnancy and maternity:</td></tr> <tr><td>Marriage and civil partnership:</td></tr> <tr><td>Religious belief:</td></tr> </table>	Race:	Sex:	Disability:	Sexual orientation:	Age:	Gender reassignment:	Pregnancy and maternity:	Marriage and civil partnership:	Religious belief:
Race:													
Sex:													
Disability:													
Sexual orientation:													
Age:													
Gender reassignment:													
Pregnancy and maternity:													
Marriage and civil partnership:													
Religious belief:													
21	How will you mitigate any potential discrimination that may be brought about by your policy or project that you have identified above?	The LDS is a document that sets out the timetable for the preparation and adoption of the Local Plan.											
22	Do any negative impacts that you have identified above impact on your service plan?	Y	N										

Signed by completing officer	Adrian Fox, Strategic Planning Manager
Signed by Service Lead or Corporate Head of Service	

Revised Local Development Scheme

Adrian Fox - Strategic Planning
Manager

What is the purpose of the LDS?

- ▶ The Local Development Scheme (LDS) is a really important document as it sets out the timetable to produce the Local Plan.
- ▶ The LDS is also a useful tool for establishing and taking forward the Council's priorities in the form of the Local Plan.
- ▶ It is good practice to review the timetable in the LDS at certain key stages such as after the Regulation 18 consultation or if circumstances changes at a national or local level that are out of our control.
- ▶ It must be made publicly available on the Council's website.

Our LDS - July 2021

2022
AUGUST - SEPTEMBER
Consult on the draft reg
18 Local Plan

Page 57 ✓

2023

2023
AUGUST - SEPTEMBER
Publish the draft Local
Plan for consultation
(Reg 19)

2024
FEBRUARY - MARCH
Local Plan Examination

2024
MAY
Consultation on the
proposed main
modifications

2024
JULY
Inspectors
Report

2024

2024
AUGUST
Adoption

Creating a sound Local Plan: Local Plan timetable:

- ▶ The Regulation 19 Local Plan is the version of the Plan that the Council wants to be examined by a Planning Inspector. It is essential the evidence base is thorough and robust.
- ▶ If the Council does not have an up-to-date LDS, this is an issue that can be raised at the Local Plan Examination.
- ▶ The current Local Plan covers the period 2019 to 2039.
- ▶ The current LDS identifies that the Local Plan would be adopted in August 2024.
- ▶ The end date of the Local Plan is important as it a requirement by government that Local Plans cover a minimum of 15 years from the date of adoption.

Creating a sound Local Plan: Government consultations

Preparing a Local Plan is not undertaken in isolation - there have been many Government consultations this year that we have responded to:

- ▶ Planning for the future;
- ▶ Changes to the Community Infrastructure Levy;
- ▶ Environmental Outcomes Report;
- ▶ Proposed changes to the NPPF;
- ▶ Implementing the Planning reforms [Levelling-up and Regeneration Bill: consultation on implementation of plan-making reforms - GOV.UK \(www.gov.uk\)](https://www.gov.uk/government/consultations/levelling-up-and-regeneration-bill-consultation-on-implementation-of-plan-making-reforms) – consultation open until 18th October 2023
- ▶ Permitted development rights [Permitted development rights - GOV.UK \(www.gov.uk\)](https://www.gov.uk/government/consultations/permitted-development-rights) – consultation open until 25th September 2023
- ▶ Operational reforms to NSIPs [Operational reforms to the Nationally Significant Infrastructure Project consenting process - GOV.UK \(www.gov.uk\)](https://www.gov.uk/government/consultations/operational-reforms-to-the-nationally-significant-infrastructure-project-consenting-process) – consultation open until 19th September 2023

Regulation 18 Local Plan Consultation

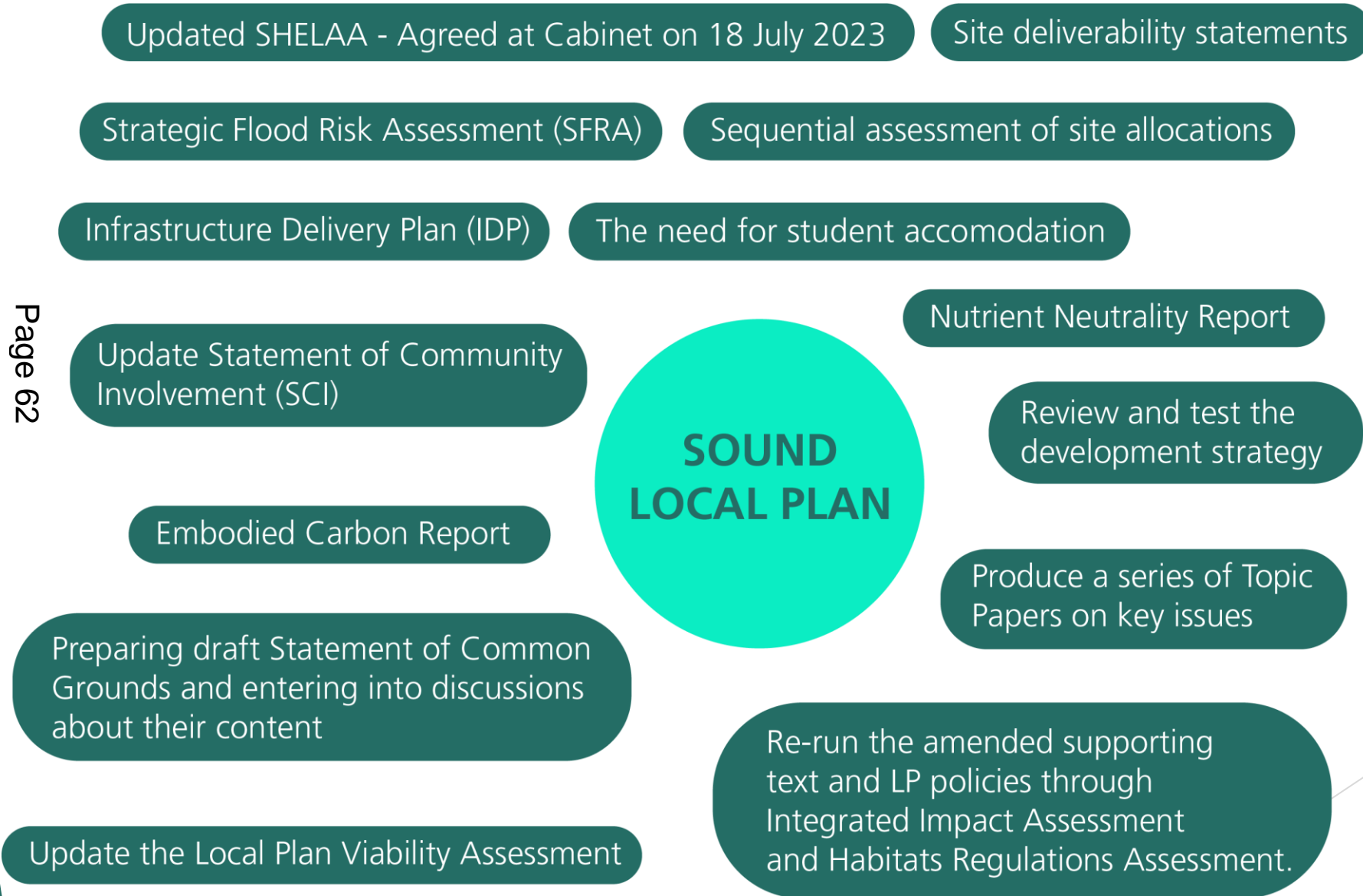
- ▶ Consultation on the Regulation 18 Local Plan took place in November/December 2022.
- ▶ Our approach towards public consultation and engagement that we undertook for the Strategic Issues & Priorities document, which was repeated in the Regulation 18 Local Plan consultation, was recognised by the RTPI as 'going above and beyond what was expected'.
- ▶ The high-level results of the Regulation 18 Local Plan public consultation were reported at a meeting of the Local Plan Advisory Group on 8 March 2023.
- ▶ Response rate was excellent, showing high levels of engagement. The Council received 3,438 written representations on the Local Plan policies and site allocations from 967 individuals, business, organisations, and charities across the district but there were significantly more individual comments than this.
- ▶ We have received a significant number of in-depth technical responses that have needed detailed consideration and input from different teams across the Council.

Current Local Plan activity - Regulation 18 Local Plan Consultation

- ▶ Officers from the Strategic Planning Team are now:
 - Undertaking, recording and finalising analysis of all comments and preparing a series of recommendations. These will be reported back to Full Council as part of the Regulation 19 Local Plan.
 - identifying and commissioning any new areas of evidence base as a result of the representations;
 - Continuing a number of initial meetings with the statutory agencies (e.g. Natural England, Environment Agency and Historic England) in order to help to clarify their representations;
 - In the process of preparing a list of matters that can be included in Statement of Common Grounds with neighbouring councils/statutory agencies;
 - Not just processing representations but the team is also working on other further technical work streams that are outlined on the next slide.

Work being undertaken during 2023

Page 62



What are the factors that have resulted in the need to a change in LDS timetable?

Nutrient Neutrality

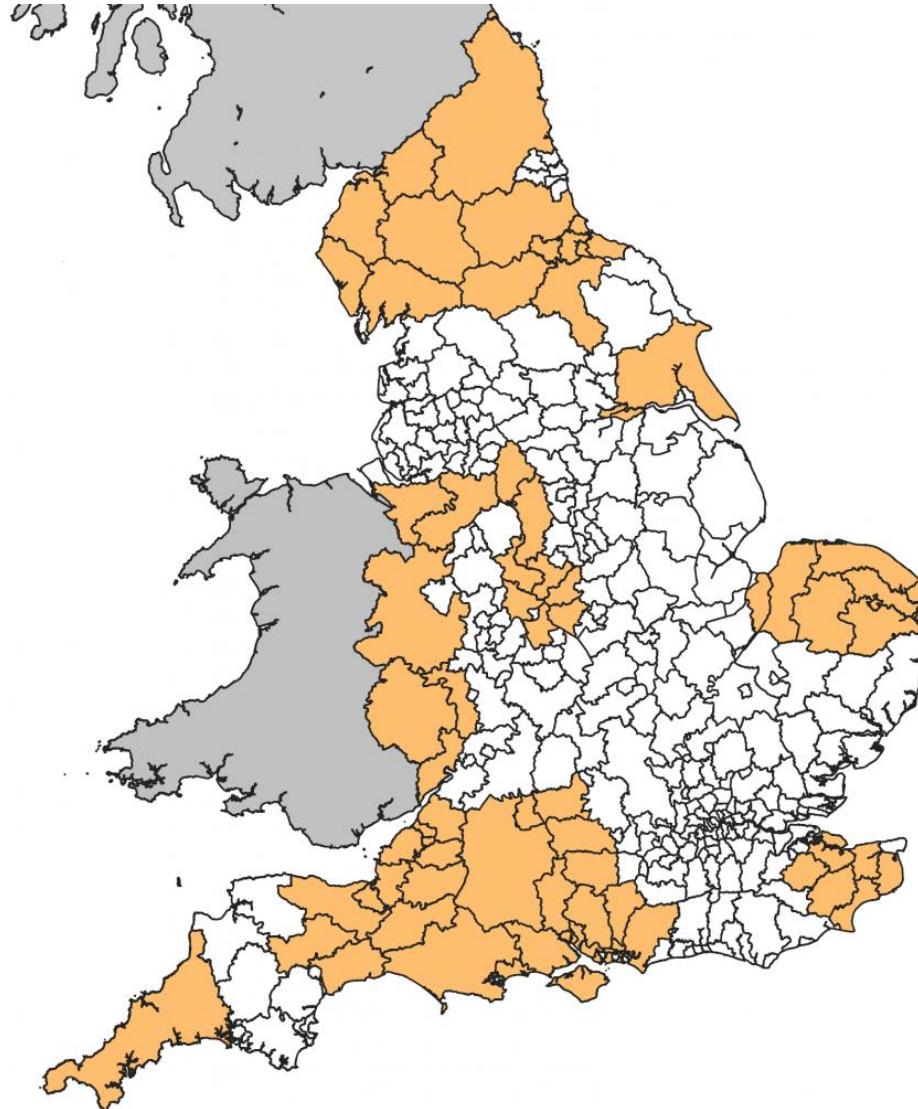
Local Authorities affected by nitrates and/or phosphorous

Page 64

[74 local authorities](#) in England from Cornwall to Northumberland are now affected by the catchment areas Natural England has drawn around these protected areas

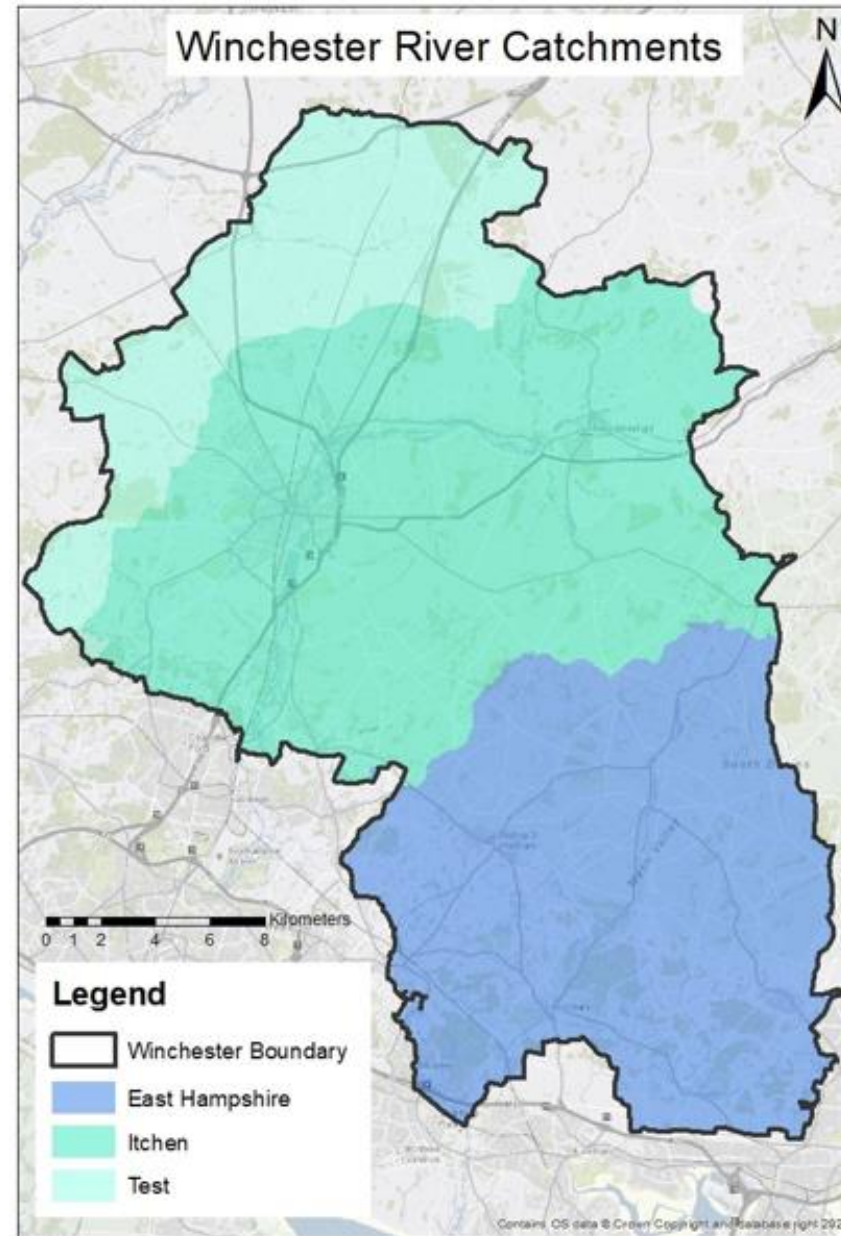
Source: www.planoraks.com – [Link](#)

[26 local authorities](#) have both nitrates and phosphorous problem.



Winchester River Catchments

The Winchester district falls within three riverine catchments in relation to nutrient neutrality. This includes the East Hampshire catchment and the Test and the Itchen catchment.



Nutrient Neutrality

- ▶ The Winchester district has the added challenge that it falls within three riverine catchments in relation to nutrient neutrality.
- ▶ Developers and site promoters have been asked as part of the 'Site Deliverability Statements' to demonstrate how they intend to address nutrients for the allocated sites in the Regulation 18 Local Plan.
- ▶ The Partnership for South Hampshire is the lead agency acting on behalf of affected local authorities and is leading on negotiations and solutions for the council.
- ▶ Funding bids to upgrade the Winchester Waste Water Treatment facilities have been agreed by PfSH and submitted to the Government - but Government funding has not been released.
- ▶ Despite the effort and time that officers working with PfSH have put into this extremely challenging issue, this remains a key area of work that still needs a **wider joint solution** – many organisations are involved and will be needed for a solution.

Town Centre and Employment Study

- ▶ We want to do the best to support our high street and the local economy - need to ensure that these studies are based on the most up-to-date information.
- ▶ Retail and Employment studies had to be updated and refreshed and as they were both completed at the outbreak of the COVID 19.
- ▶ The impact on the high streets and the economic ramifications, were far more far reaching than were first imagined and needed time to settle for a fair assessment.
- ▶ Assistance was sought via the Planning Advisory Service (PAS) to provide support preparation of this technical study brief in Autumn 2022.
- ▶ Many other LPA's are undertaking similar work now which means that consultants doing this specialist area of work are in high demand and results are due be shared at a stakeholder event in October 2023.

Strategic Transportation Assessment

- ▶ The Strategic Transport Model is provided by the County Council but recalibration of the model was required to take account of new travel trends post pandemic. This has taken longer than the county council expected.
- ▶ The trading arm of Hampshire County Council (HCC) has been appointed to prepare a Strategic Transport Assessment, however the timetable supplied by HCC was much longer than was originally indicated, and costs are higher.
- ▶ The work will involve undertaking transportation modelling and subsequent report - it will cover sites with existing planning permission and sites that are being built out and includes:
 - ▶ A baseline transport model run (no site allocations, the baseline position);
 - ▶ A do-minimum transport run (with site allocations but with no mitigation);
 - ▶ A do-something transport run (with site allocations and associated mitigation);

Strategic Transportation Assessment

- ▶ The Assessment by HCC is an extremely important piece of the evidence base as highway implications are often raised by local people as one of the key areas of concerns.
- ▶ Importantly, it not only covers roads but will put a clear focus on sustainable transport options over the needs of the car.
- ▶ From a nature conservation perspective, the traffic data that is gathered from the above transport model will quantify the likely impacts and confirm which roads within 200m of a European site that could experience significant increases in traffic.
- ▶ Extremely important that the cumulative impact of the Local Plan site allocations is fully assessed, and mitigation measures are identified and costed into the Local Plan Viability Assessment.

Statement of Community Involvement (SCI)

- ▶ The public engagement on public engagement of the Local Plan was recognised by the RTPi as 'going above and beyond what was expected' the SCI needs to be updated to recognise this.
- ▶ To ensure a plan is found sound, the opportunity for the public and partners to comment is essential.
- ▶ The Council must legally comply with its own statutory SCI which the Council adopted in December 2018. The Government requires SCI's to be updated every 5 years, and it is especially important to ensure engagement is effective in post pandemic.
- ▶ The SCI is being updated to achieve the widest possible engagement on the Local Plan process and will be used during the Regulation 19 consultation.
- ▶ Following consultation, a revised SCI will be considered by Cabinet in December 2023.

What external meetings have happened to validate our approach?

Department of Levelling, Housing and Communities (DLUHC) - update meetings

Page 72

Two meetings have taken place with the Department of Levelling, Housing and Communities (DLUHC) in July 2022 and April 2023 to keep them up-to-date with progress on the Local Plan:

- 1) Key challenges (such as nutrients) that the Council is facing with bringing the new Local Plan forward; and
- 2) What assistance DLUHC could provide to the Council to assist with bringing forward the Local Plan.

Local Plan Planning Inspectorate (PINS) Advisory meeting

The Advisory meeting can be used to discuss a range of factors and is good practice and helps to ensure that we produce a 'sound' Local Plan. This addressed:

- ▶ Approach towards Duty to Cooperate
- ▶ Plan Period
- ▶ Standard method and affordable housing
- ▶ Unmet needs
- ▶ Phasing
- ▶ Housing supply
- ▶ Plan strategy and site selection
- ▶ Habitats Regulation Assessment
- ▶ Gypsies and Travellers provision
- ▶ Neighbourhood plans
- ▶ Approach towards nutrients
- ▶ Carbon neutrality and low carbon infrastructure

Local Plan Planning Inspectorate (PINS) Advisory meeting

- ▶ It was extremely helpful and beneficial to seek constructive feedback from an Inspector in terms of what they would be looking for to secure a sound Local Plan.
- ▶ The feedback was positive overall and identified the benefit of more Topic Papers to help explain the rationale and the approach that the Council has taken towards tackling some of the key issues that the Local Plan is dealing with.
- ▶ The production of more detailed Topic Papers will take officer time, but this would be time well spent as it will greatly assist the Inspector in identifying what the key issues are, and it will also help to cut down on the examination time.

Producing a sound Local Plan - Planning Advisory Service (PAS)

- ▶ Officers contacted PAS as they provide free consultancy and peer support to help local authorities prepare Local Plans. Again, this is good practice.
- ▶ DAC Planning were subsequently appointed by PAS to conduct an independent review of a draft Local Plan timetable.

We asked DAC Planning whether the Local Plan could be brought forward any quicker and whether enough time had been allowed in the process to complete all of the necessary steps to prepare a sound Local Plan?

Producing a sound Local Plan - Planning Advisory Service (PAS)

DAC Planning commented that:

- The council needed to be mindful of the resources that were needed in the Strategic Planning team to enable them to produce a sound Local Plan;
- The review of the LDS was supported in order to allow sufficient time to complete all of the necessary Evidence Base;
- Given the complexity the work streams and their inter-dependency, additional focus on existing project management of the Local Plan; and
- Ensure that the Strategic Planning Team is able to concentrate on the Local Plan and the extent that they are involved in non-Local Plan matters.

Regulation 19 Local Plan

The Regulation 19 Local Plan will need to be agreed by Full Council as this is the version of the Local Plan that the Council would like examined. It's important its robust and 'sound.'

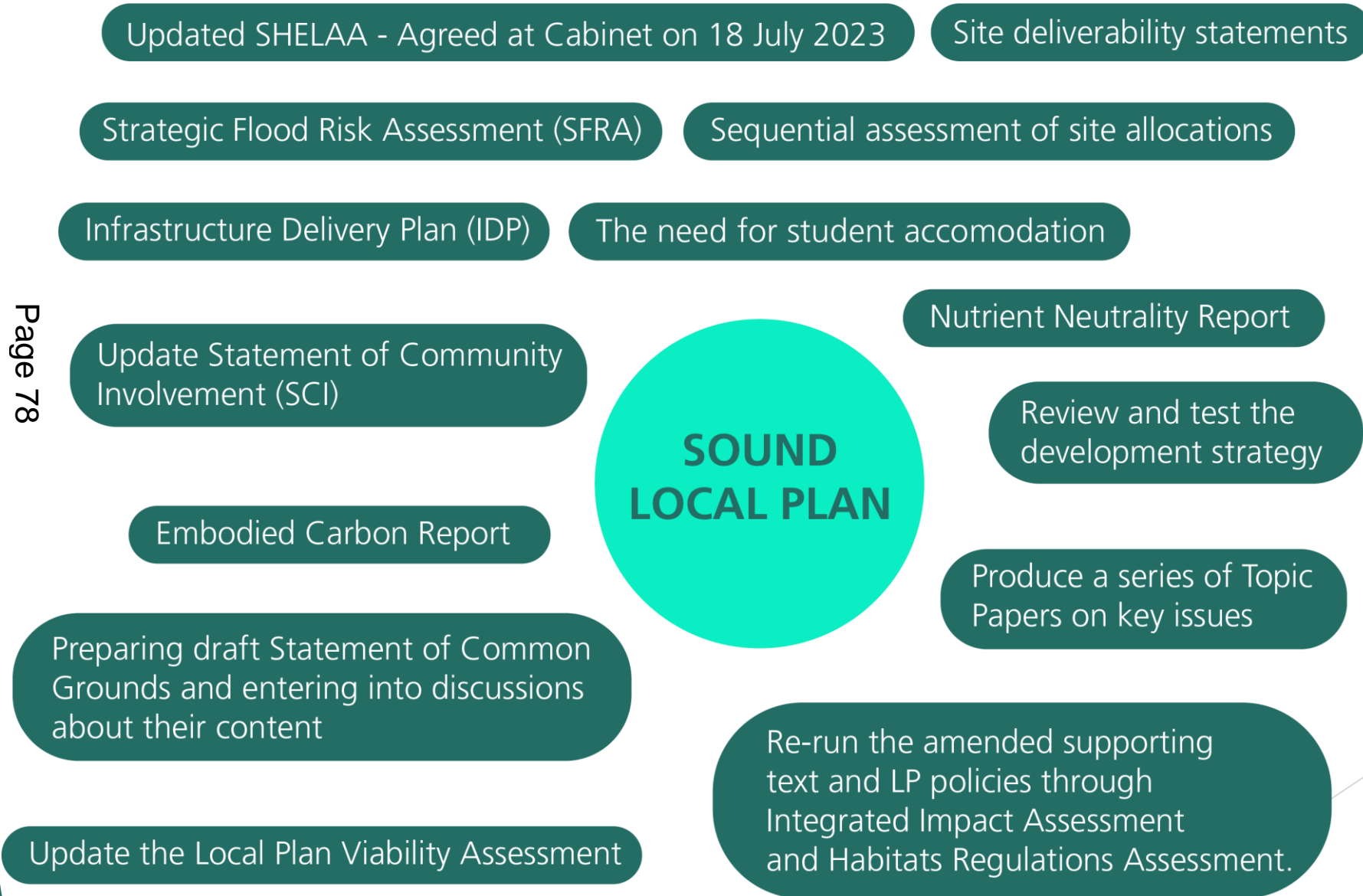
In summary, The LDS has been revised to allow additional time for the factors described in this presentation, the speed of which are outside of our control;

Page 77

- Nutrient neutrality remaining a challenging issue for the district despite efforts by officers and members to solve it, plus the added complexity of the district having **both** nitrates and phosphorus issues.
- The longer than expected timescale of the Strategic Transport Assessment.
- Consultation on the Regulation 18 Local Plan successfully engaged with a wide range of people and highly technical responses have resulted in the need for in depth advice.
- New areas of work identified through the public consultation at Regulation 18 stage needs appropriate time and consideration before we can safely move to the Regulation 19 stage.
- It also allows time to develop in depth topic papers as described as beneficial by PINS.

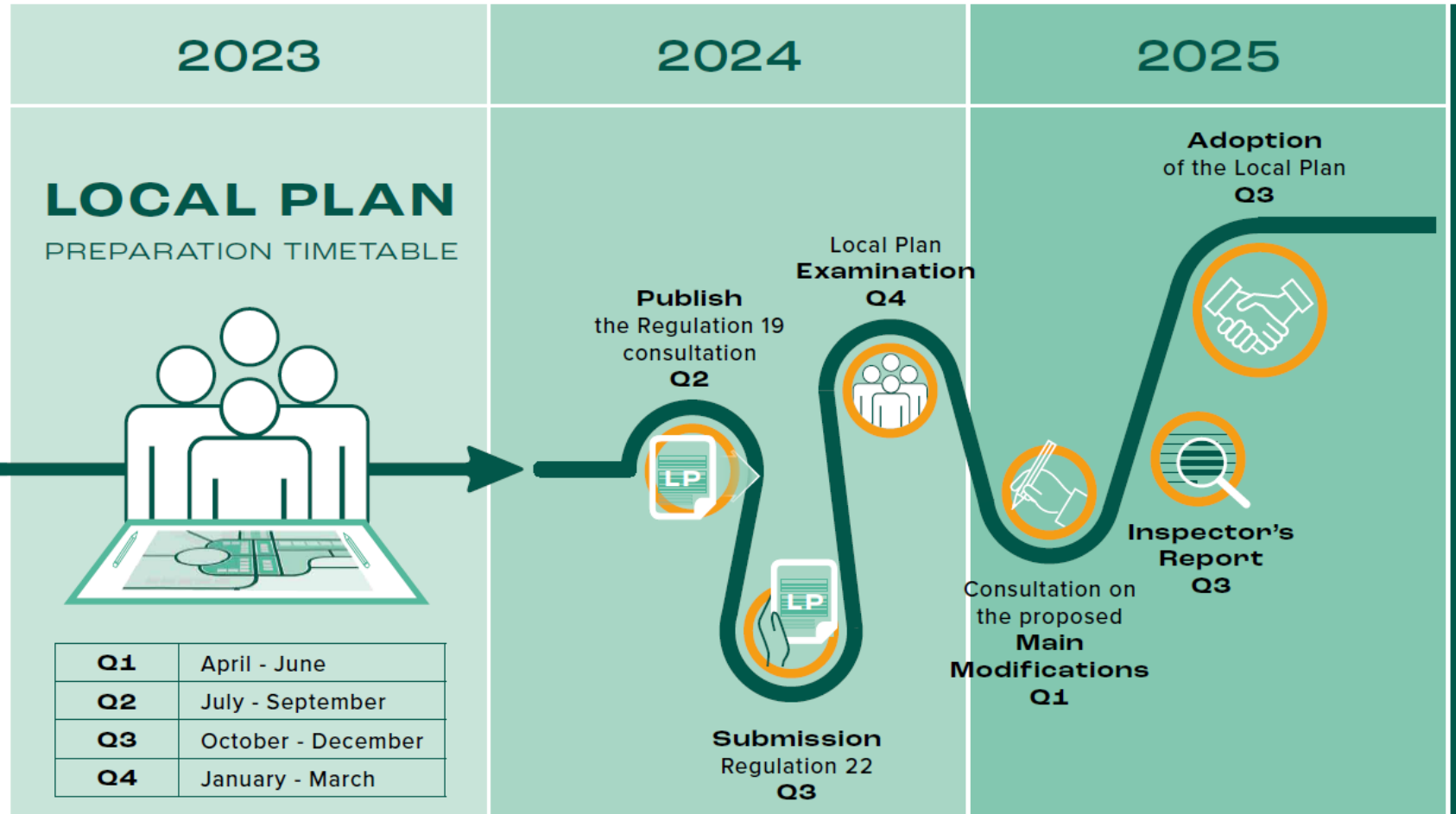
Work being undertaken during 2023

Page 78



Revised timetable

Page 79



- ▶ The quarters are based on municipal years.

Revised Local Plan timetable

There is work that needs to be undertaken in order to secure a sound Local Plan, and the LDS has to be adjusted. Therefore, we will:

- ▶ Extend the timetable for preparing the Local Plan which would mean that the Local Plan period would be changed to from 2019 – 2039 to 2020 – 2040.
- ▶ Move the public consultation on the Regulation 19 Local Plan to August/September 2024.
- ▶ Hold the Local Plan Examination at the end of 2024.
- ▶ Ensure that the Local Plan is adopted at the end of 2025.

- ▶ the risk of extending the timetable is minimal as we have a 5 year housing land supply.

- ▶ Our Plan will be supported by the most up to date transport analysis, retail and employment data, the outcome of the public consultation and ensuring that we have listened and acted upon the feedback that we have received to ensure that we can produce a sound Local Plan.

Comments and questions:

This page is intentionally left blank